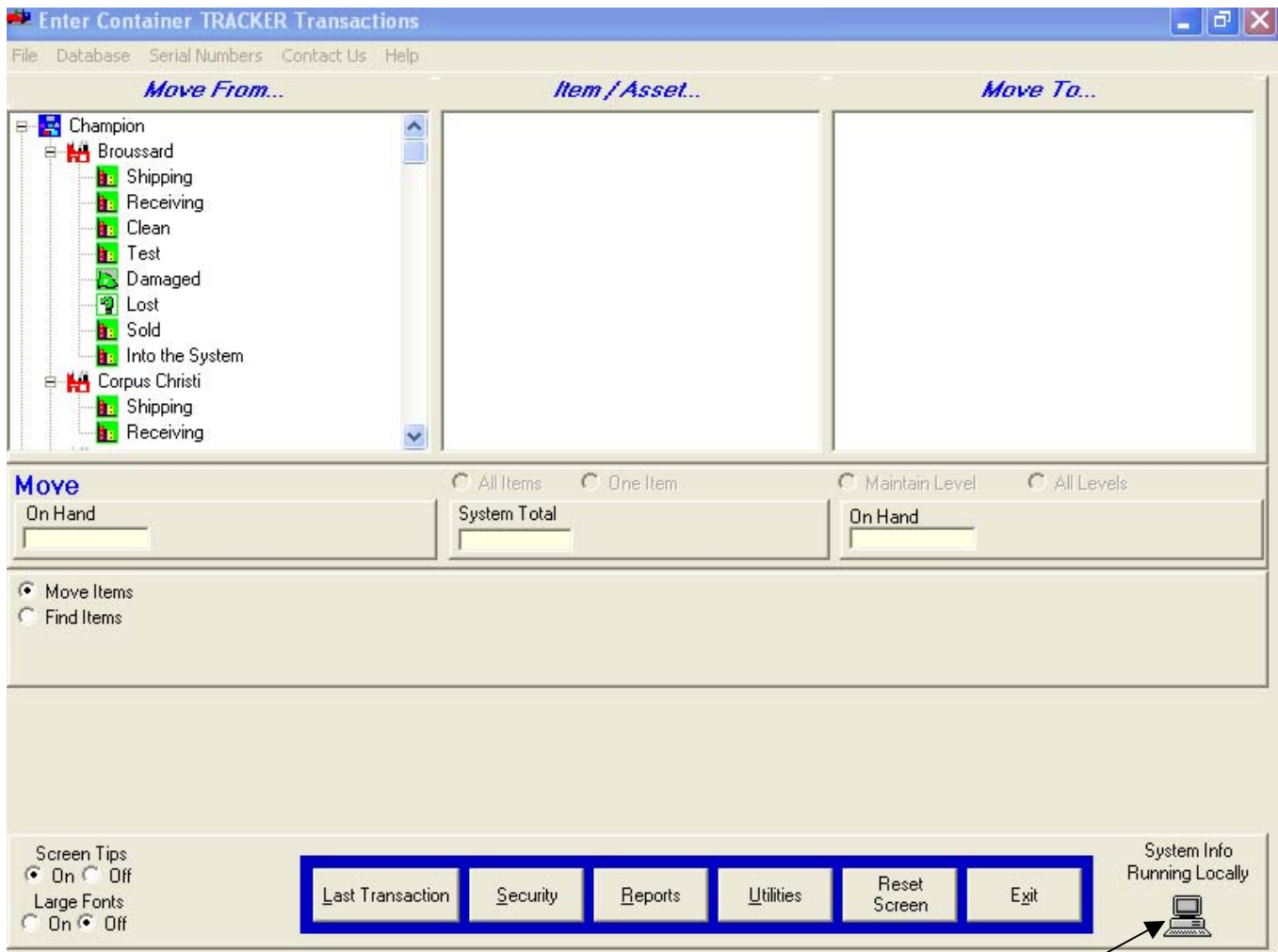


## How To Replace .EXE or .MDB Files

### Determining Installed Locations

1. Start **ContainerTRACKER®** in the normal manner.
2. In the lower right-hand corner of the Main Screen is an icon of a single PC (CT running on a local PC) or multiple PCs (CT or database located on a network).
3. Click on the computer(s) icon and the System Information screen will display.



Click here for System Information.

## How To Replace .EXE or .MDB Files

### System Information Screen

The System Information Screen shows 1) the database location, 2) where the program is running, 3) Operating System Information, and, 4) System Configuration Information.

Database Location      Software Running In      Operating System Information

Data Base Location:		C:\1VBM\CT	
Software Running In:		C:\1VBM\CT	
Operating System Information:		Windows NT, Ver. 5.01, Build 2600	
Product Type:	Manual	Patch Level:	0
Version:	3.12.17	Popup State:	Some
Licensed To:	Champion Technologi	SQL State:	Off
Customized For:	None	Find Item State:	On
Custom Address:	304 Ida Road	Serial Number State:	All
Number of Users:	1	System Dwell:	On
Multiple DBs:	Off	Custom Reports:	New
DB Mod Level:	15	Extra Info. Screen:	MainScreen
User Name:	CTAdmin	Serial #:	X
User Signed On As:	Admin	Rev. 2 Date:	Initial
Contact Name:		Ben Lawrence	
Location:		304 Ida Road	
Address:		Street Addr.	
Phone Number:		337-839-9920	
Email Address:		Ben.Lawrence@CHAMP-TECH.com	
Containers:		20 S 20 V 0 C 0 D 0	
Locations:		All Blue Red Yellow Green LandCs:	
		1651 96 424 0 1227 24939	

**Database Location** – is the physical location of the *containers.mdb* file. It is also the location where all the system reports are stored.

**Software Running In** – is the physical location of the *containers.exe* file. The Icos and the StartUp folders are in this location.

Each location contains essential **Container TRACKER®** files.

## How To Replace .EXE or .MDB Files

### Replacing the containers.exe File.

1. Unzip the file as directed in the 'HowFilesAreSentByEmail.doc' instruction. This Tech Notes is usually sent with the new 'containers.exe' file. Copy containers.exe to the **Software Running In** directory as identified above. If asked 'Do you want to overwrite the existing containers.exe or similar operating system message, answer 'Yes'.

### Replacing the containers.mdb File.

1. Unzip the file as directed in the 'HowFilesAreSentByEmail.doc' instruction. This Tech Notes is usually sent with the new 'containers.mdb' file. Copy containers.mdb to the **Database Location** directory as identified above. If asked 'Do you want to overwrite the existing containers.mdb or similar operating system message, answer 'Yes'.