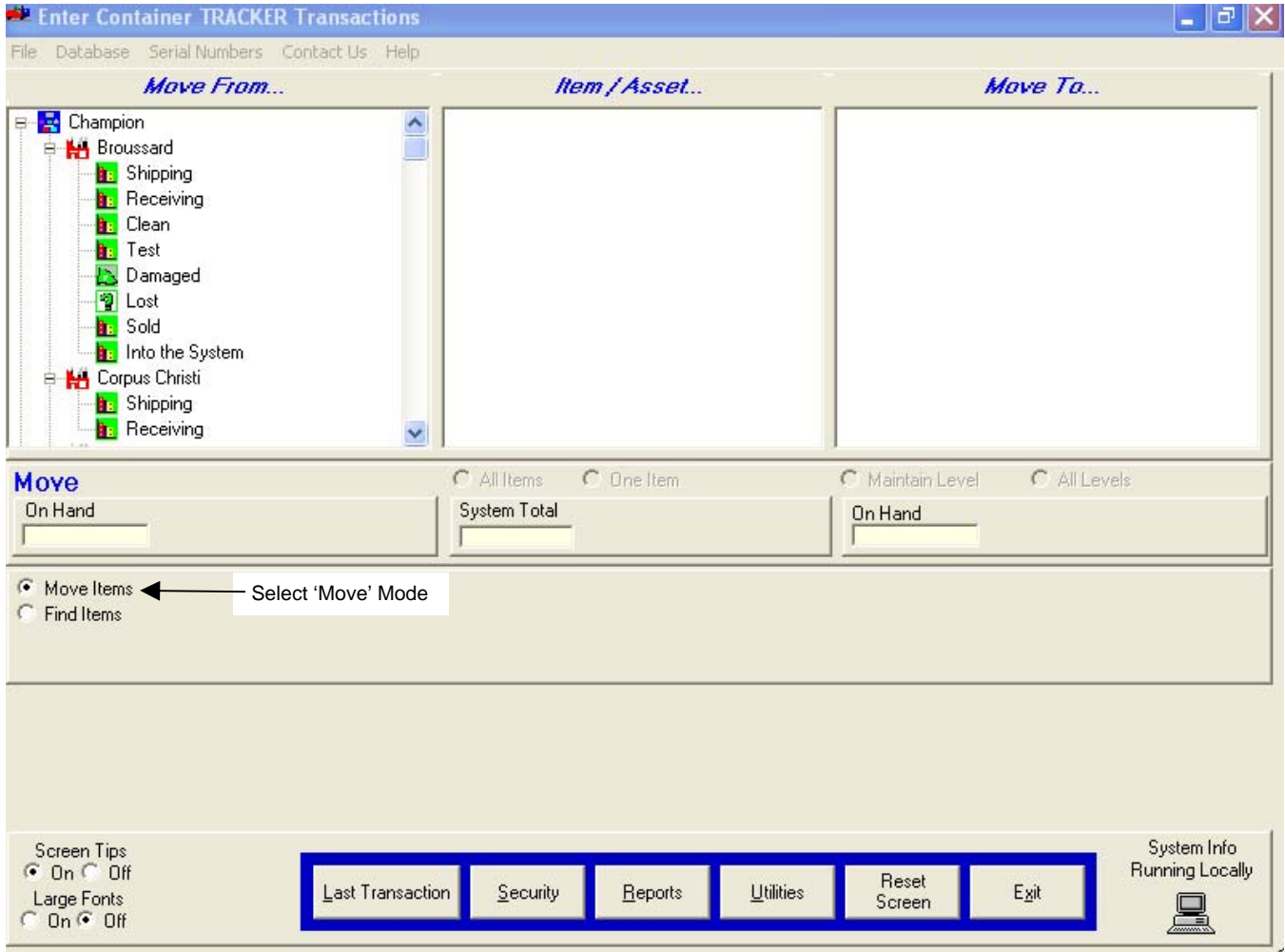


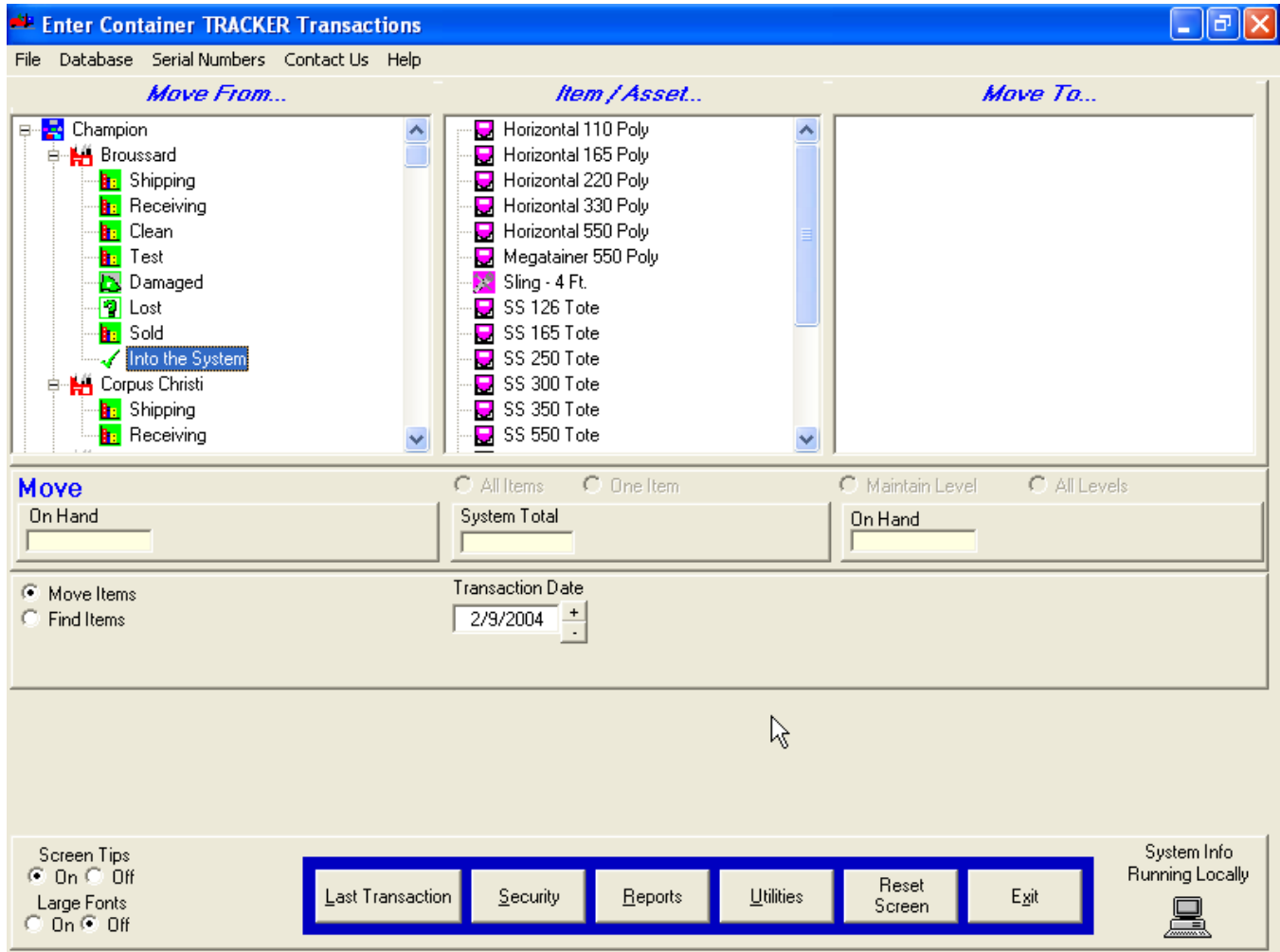
### How to Move Items With Serial Number(s)

- 1) Select the Move mode. If the 'Move' and 'Find' radio buttons do not appear you are always in the 'Move' mode.



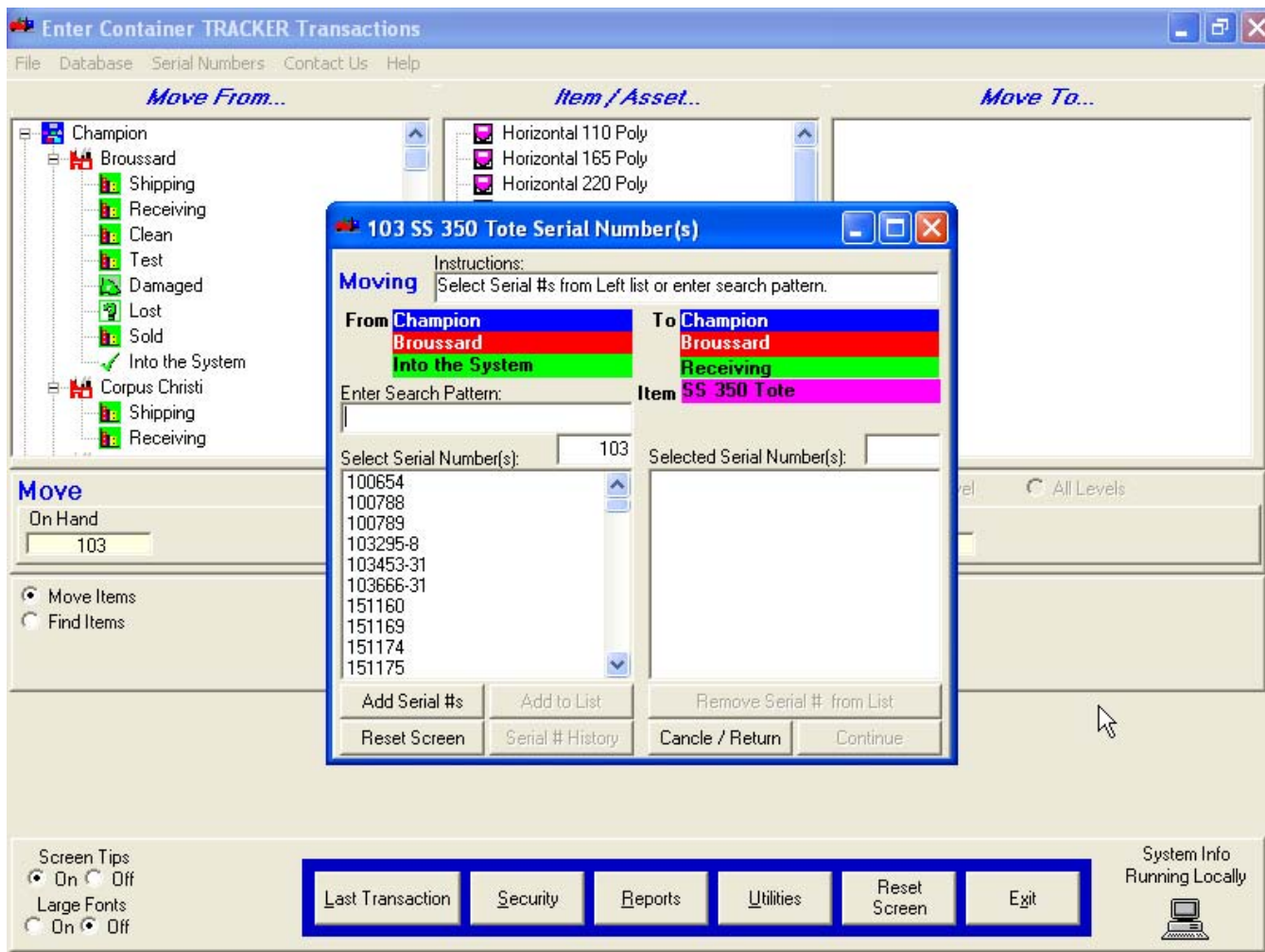
## How to Move Items With Serial Number(s)

- 2) Select the location from the Left-Hand Tree where the serial number(s) is(are) currently.



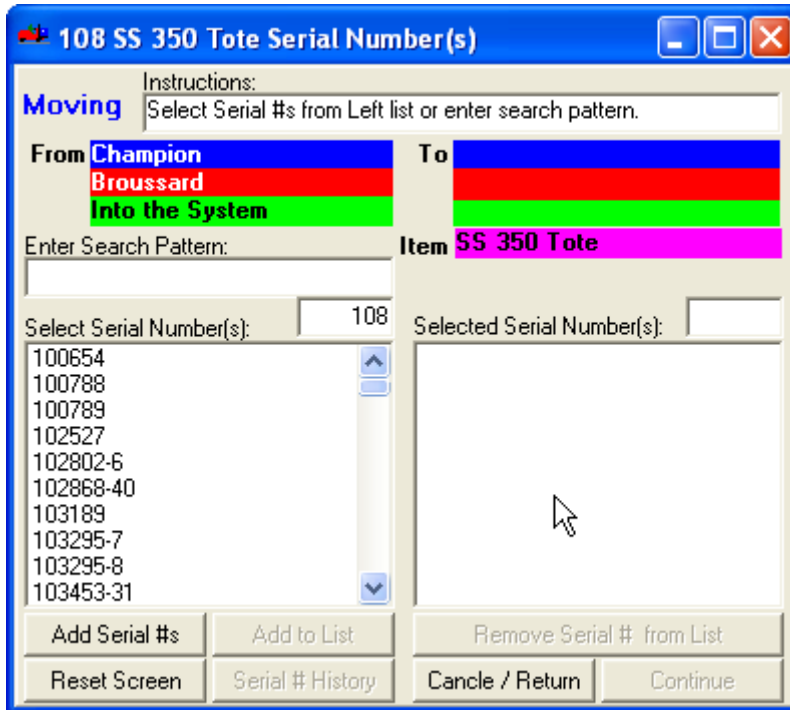
### How to Move Items With Serial Number(s)

- 3) Select the type of Container (Item) you wish to move. The 'Select Serial Numbers' screen will display.

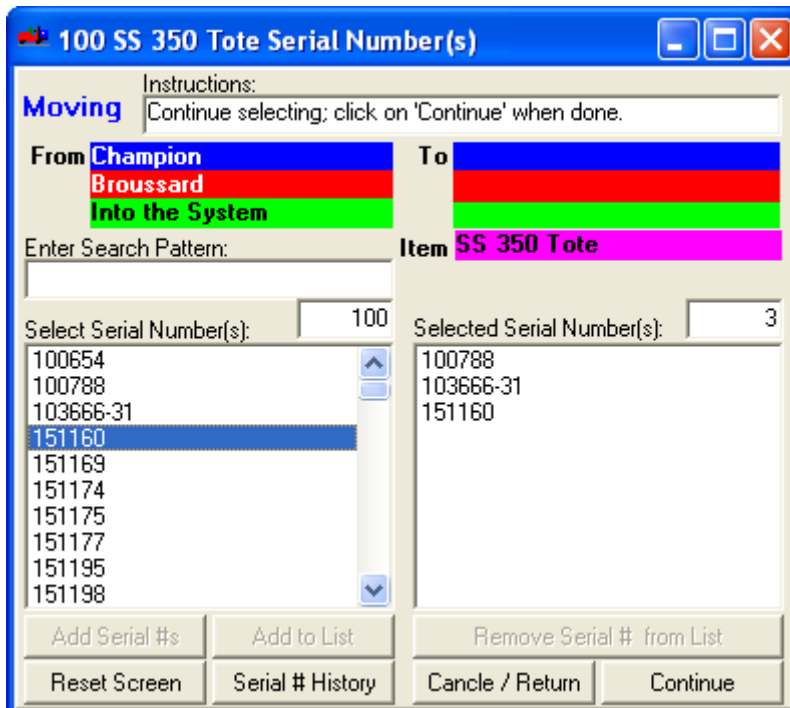


### How to Move Items With Serial Number(s)

- 4) Select the Serial Number(s) from the left-hand list.

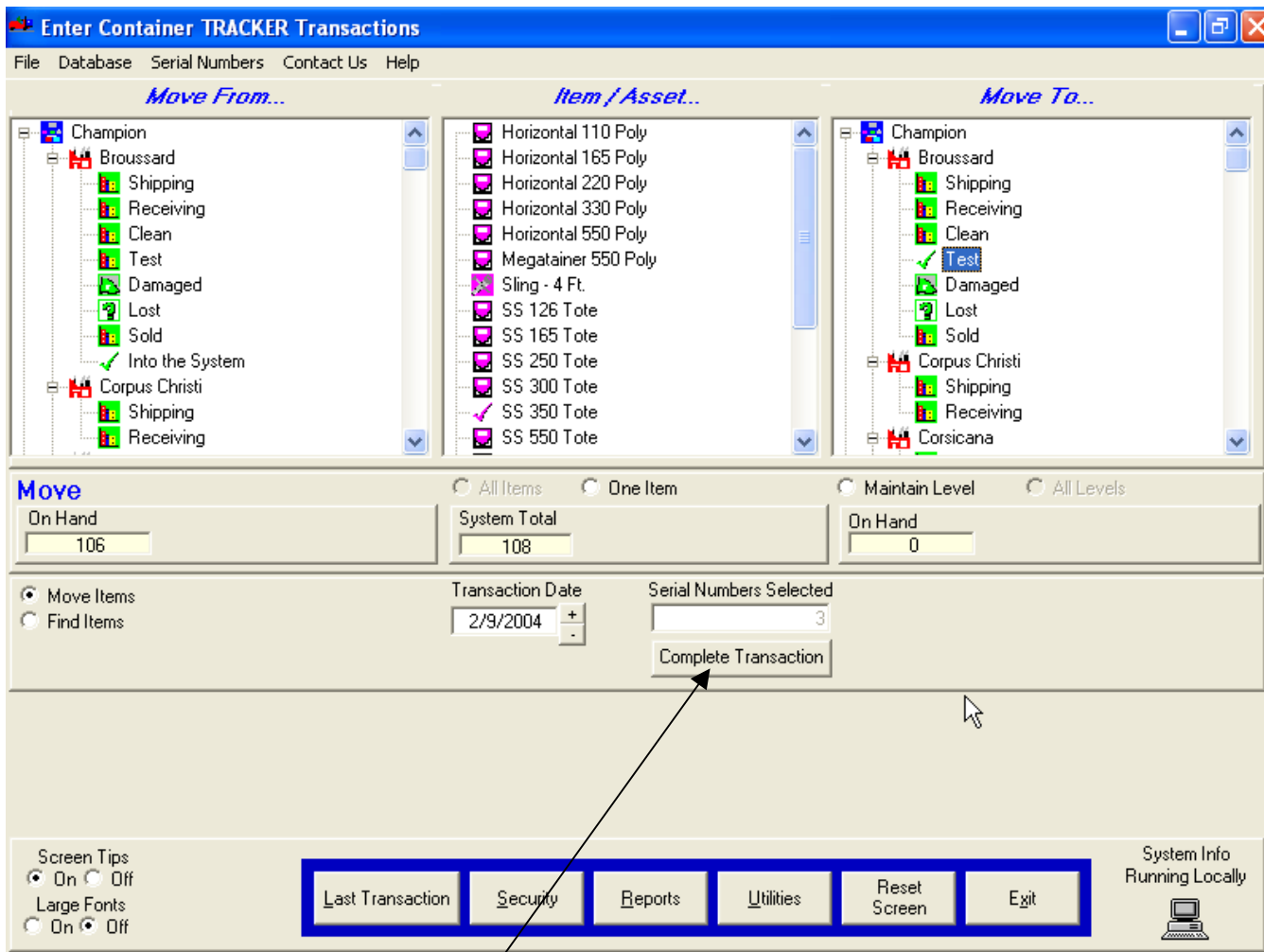


- 5) Click on the 'Continue' button.



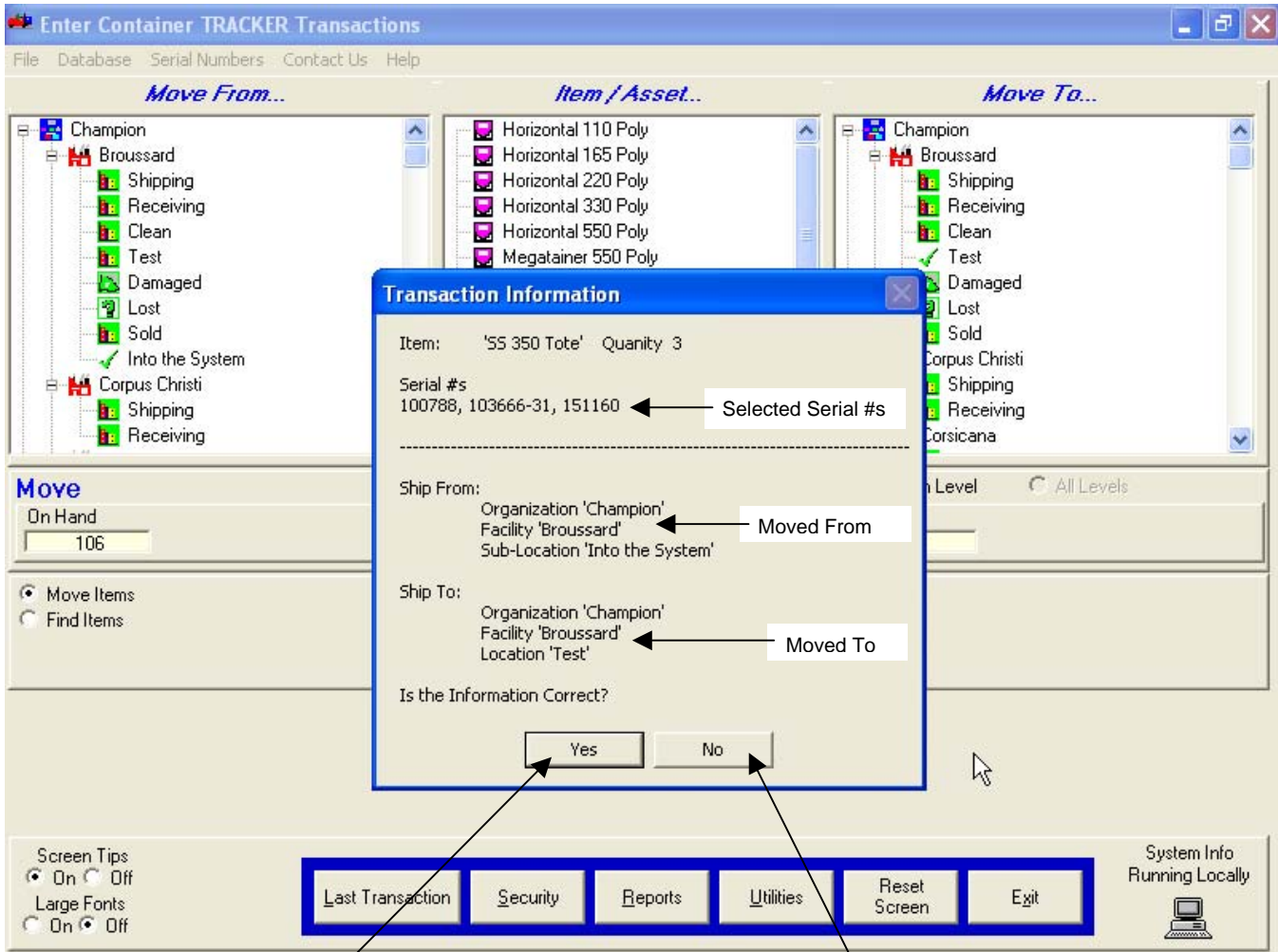
### How to Move Items With Serial Number(s)

6) Select the 'Move To' location from the right-hand tree.



7) Click on the 'Complete Transaction' button.

## How to Move Items With Serial Number(s)



- 8) Click on the 'Yes' button to finish the transaction; click on the 'No' button to cancel the transaction.