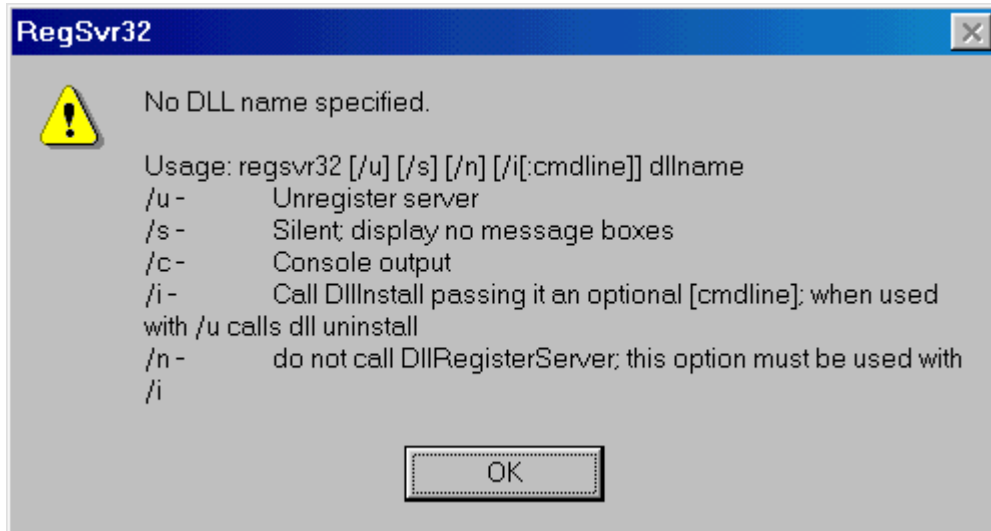


How To Manually Register DLLs & OCXs

You can register DLLs and OCXs manually as you do any control, using the Windows Regsvr32.exe program. In a Command window or from the 'Run' dialog box on the 'Start' menu use the following syntax:

```
Regsvr32.exe path/controlName
```



The path must be a DOS path. That is, no spaces and eight or less characters per path segment.

This will fix any self-registering COM DLLs or other Dlls that fail to register on installation.