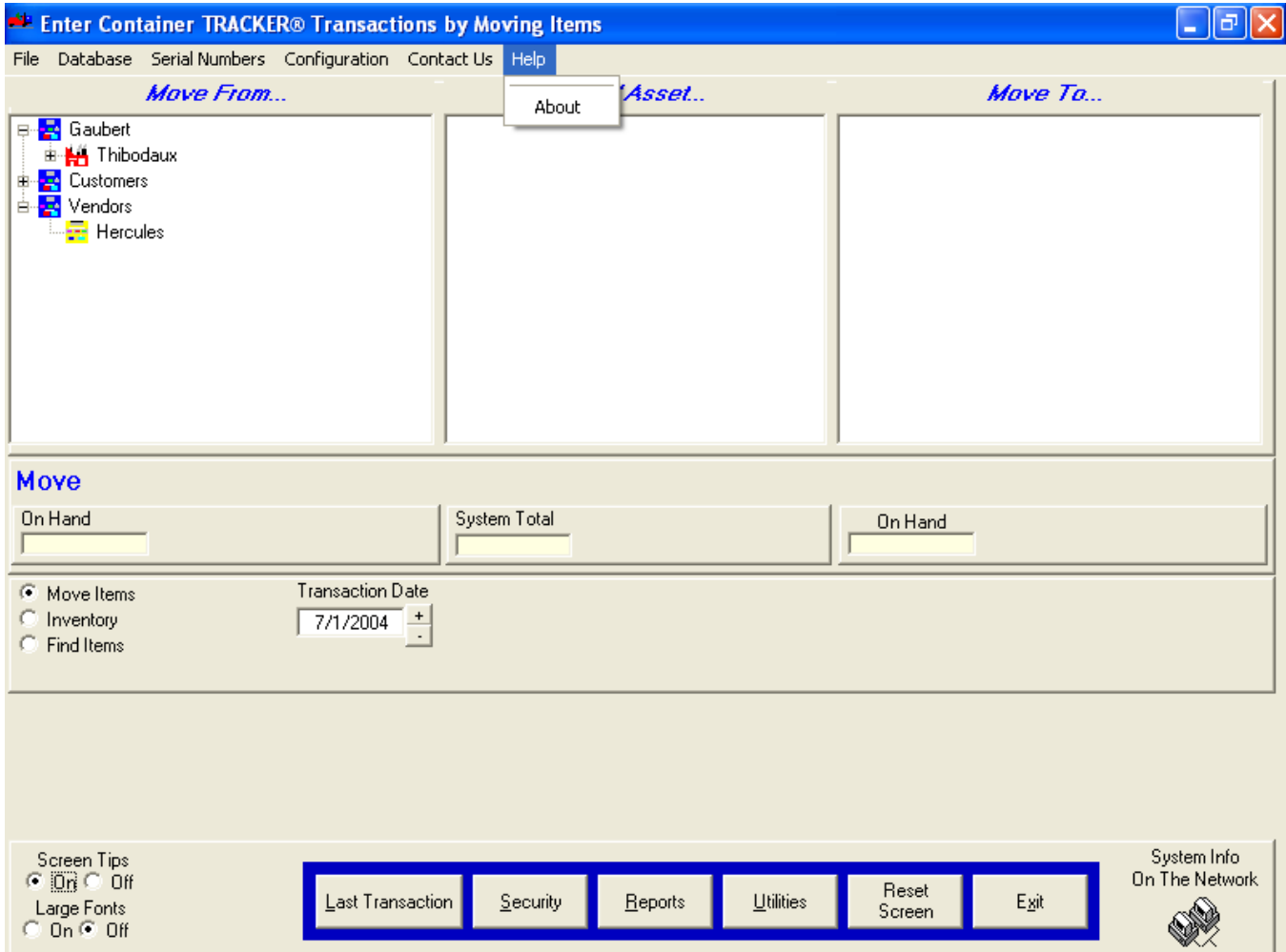


## Getting *Container*TRACKER® Version Number

To get the *Container*TRACKER® version number and date, follow these steps:

1. Start *Container*TRACKER® in the normal manner.
2. Select the Help menu from the Main Screen Menu bar



3. Click on the 'About' menu item. This will display the 'About' screen.

## Getting *Container*TRACKER® Version Number



4. In the right-hand side of the screen, about 1/3 from the top is the Version number and the Date.