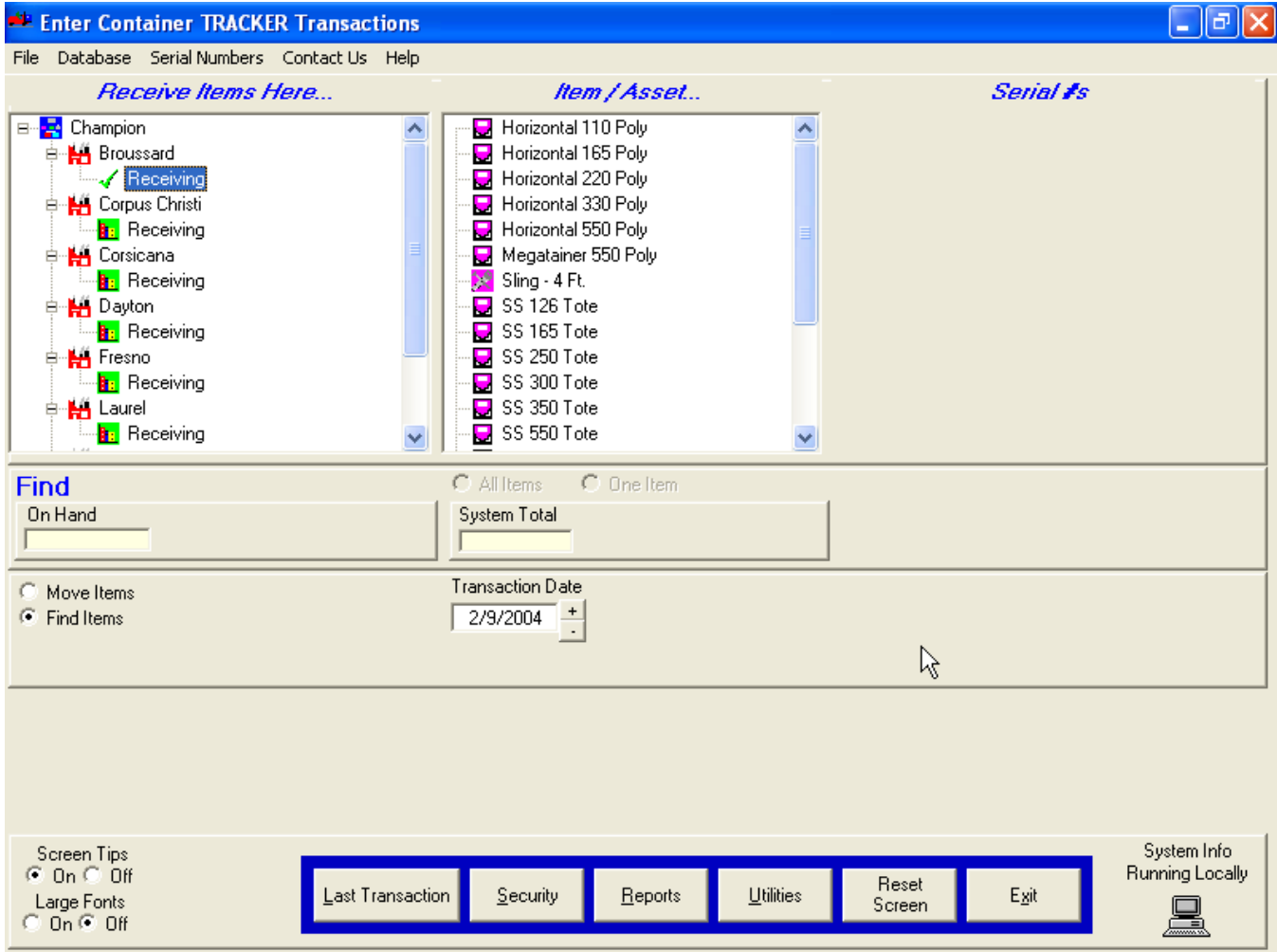


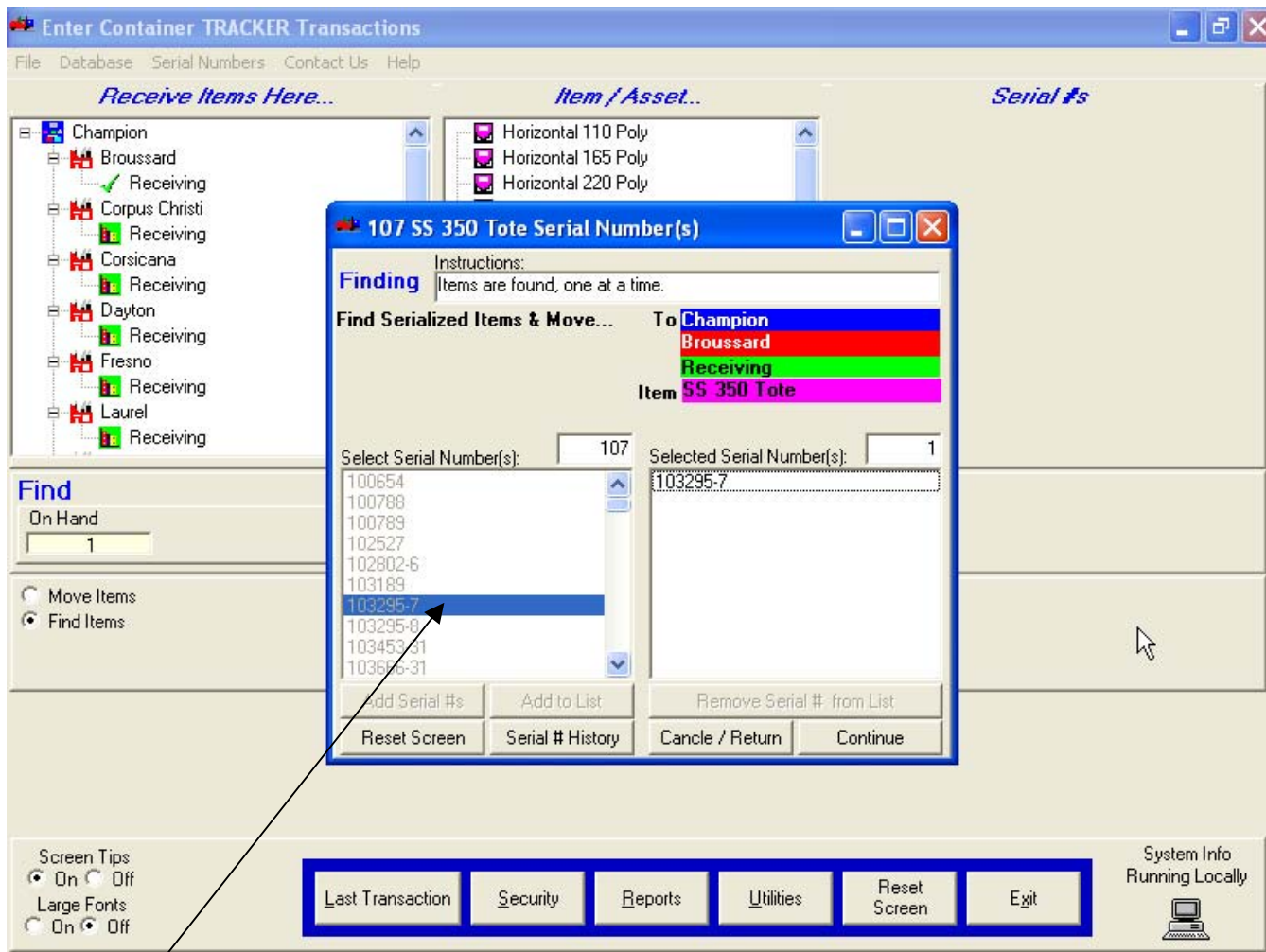
How to Get a Serial Number's History

- 1) Select the location where you will receive the serial number from the left-hand tree ('Find' mode). Or, select the location where the serial number is currently ('Move' mode).



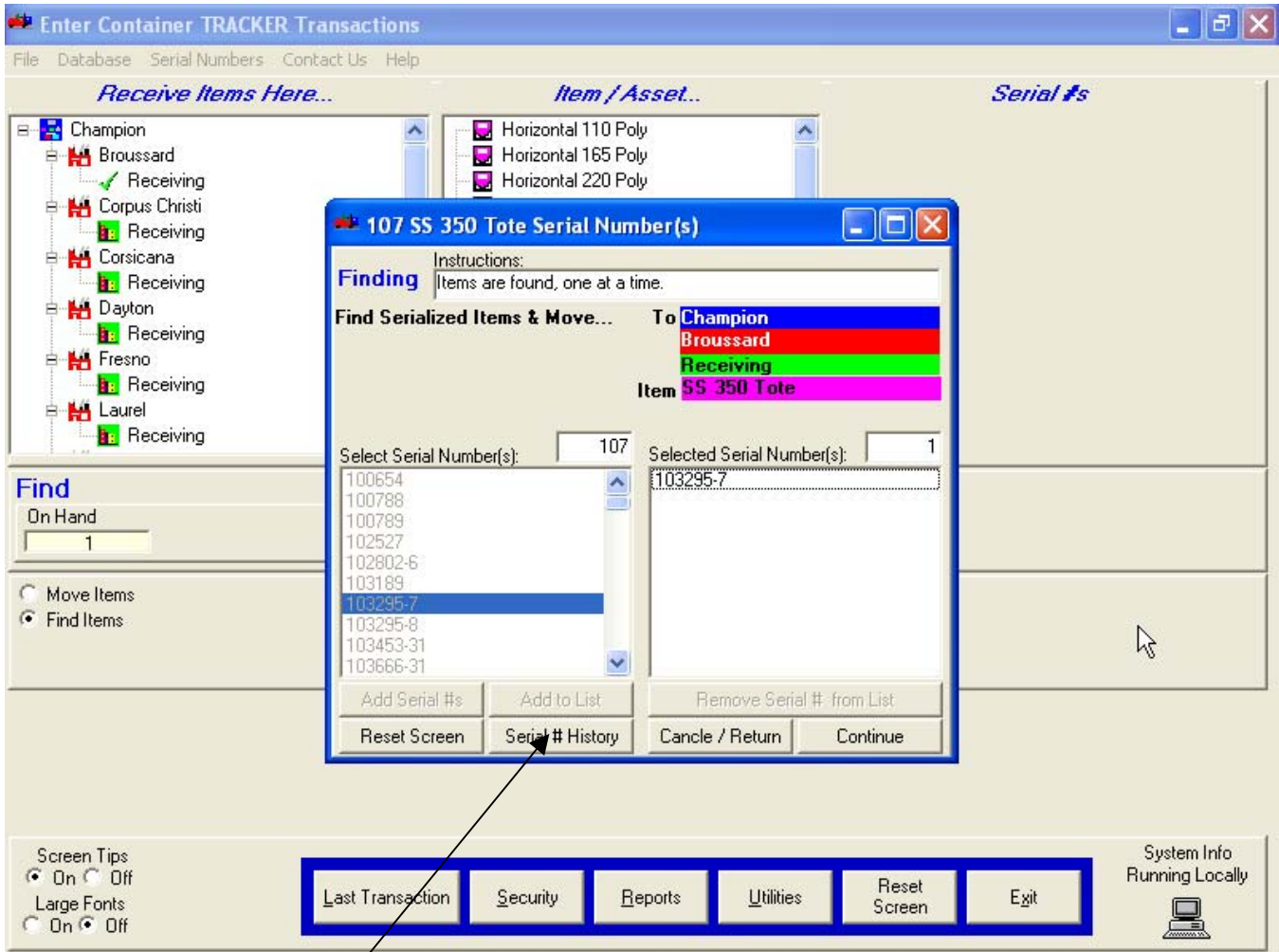
How to Get a Serial Number's History

- 2) Select a Container (Item) from the center tree.



- 3) Click on a single serial number in the left-hand list.

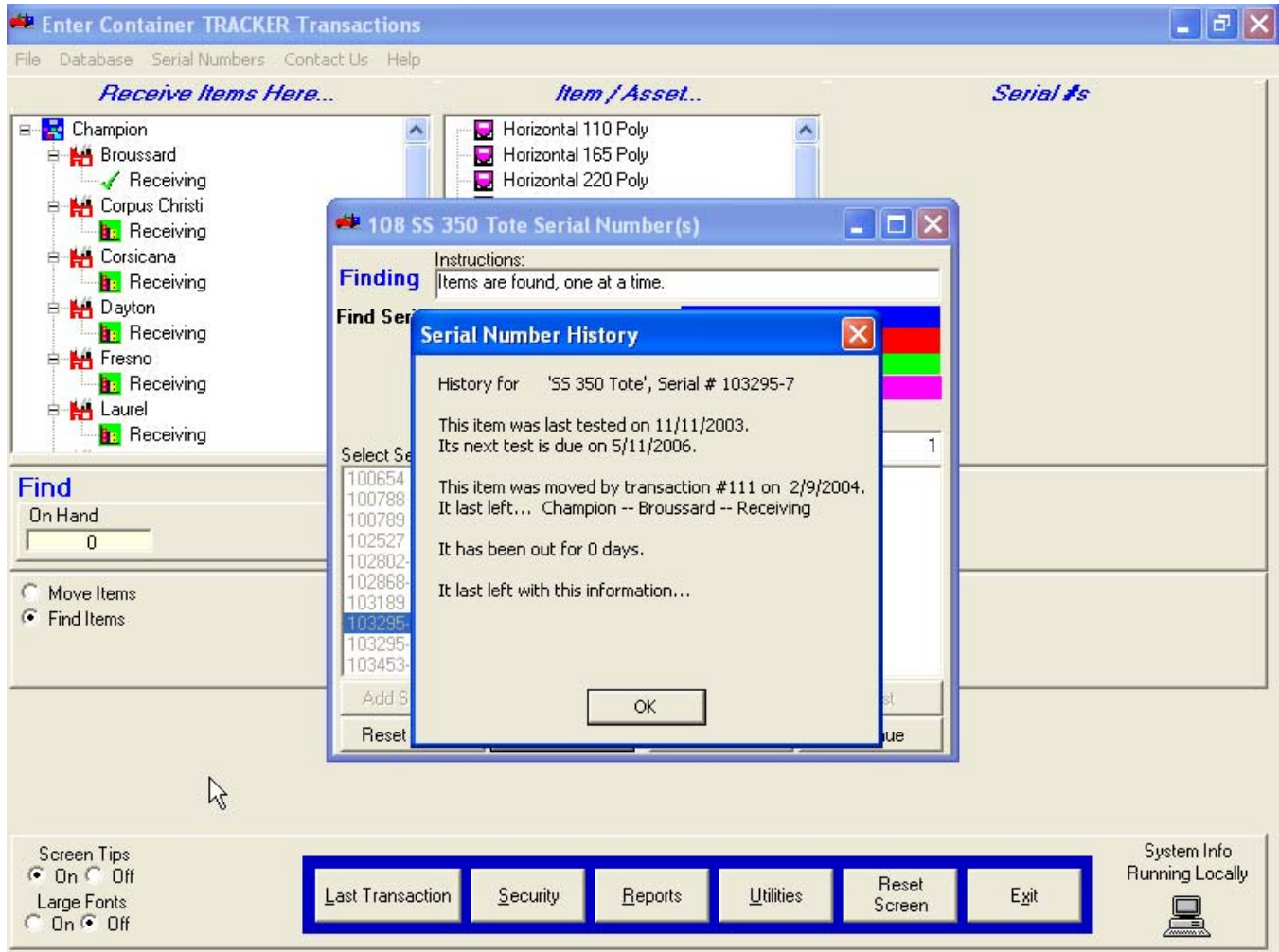
How to Get a Serial Number's History



4) Click on the 'Serial # History' button.

How to Get a Serial Number's History

5) The Serial # History dialog box is displayed for the selected serial number.



How to Get a Serial Number's History

