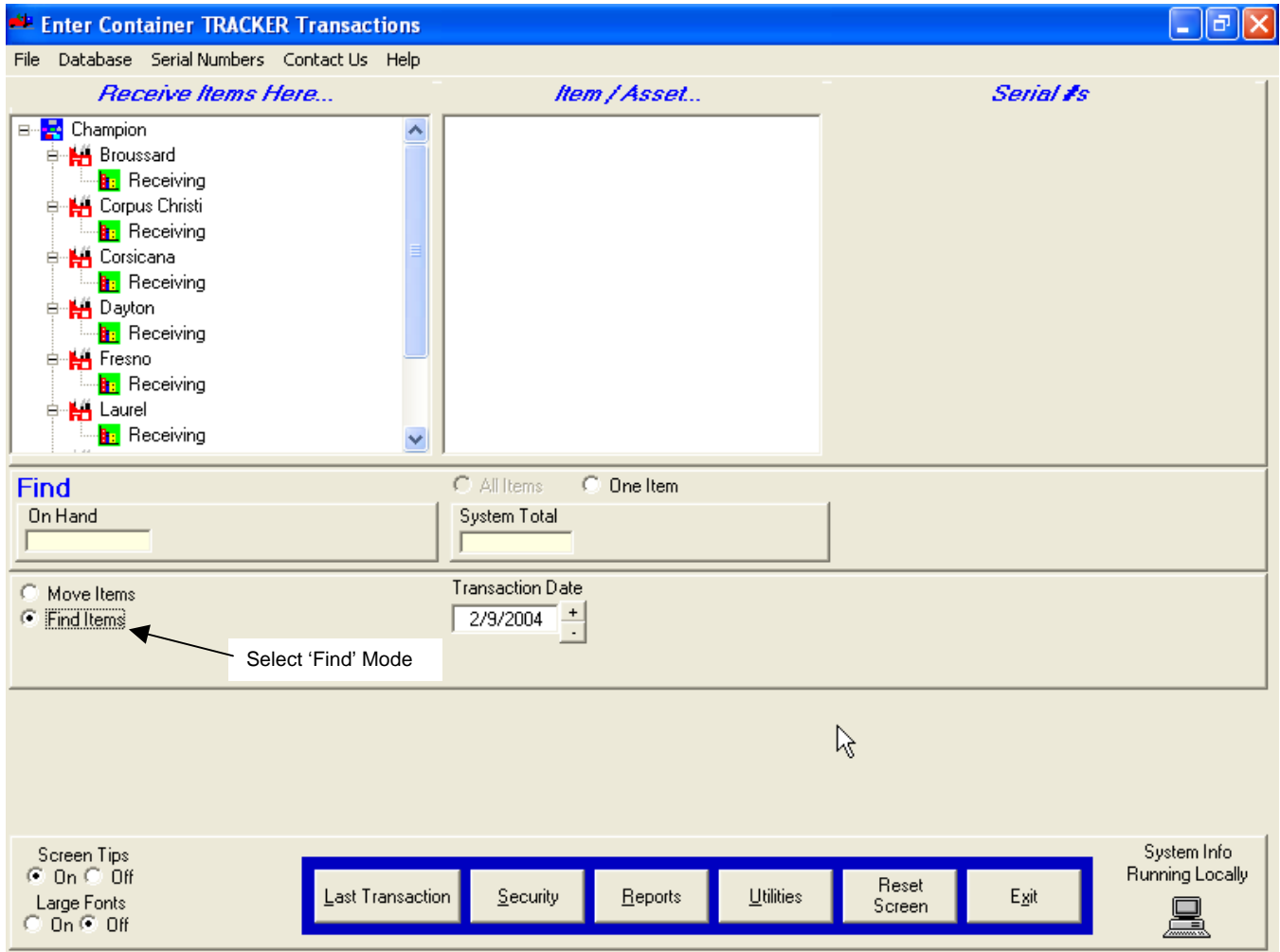


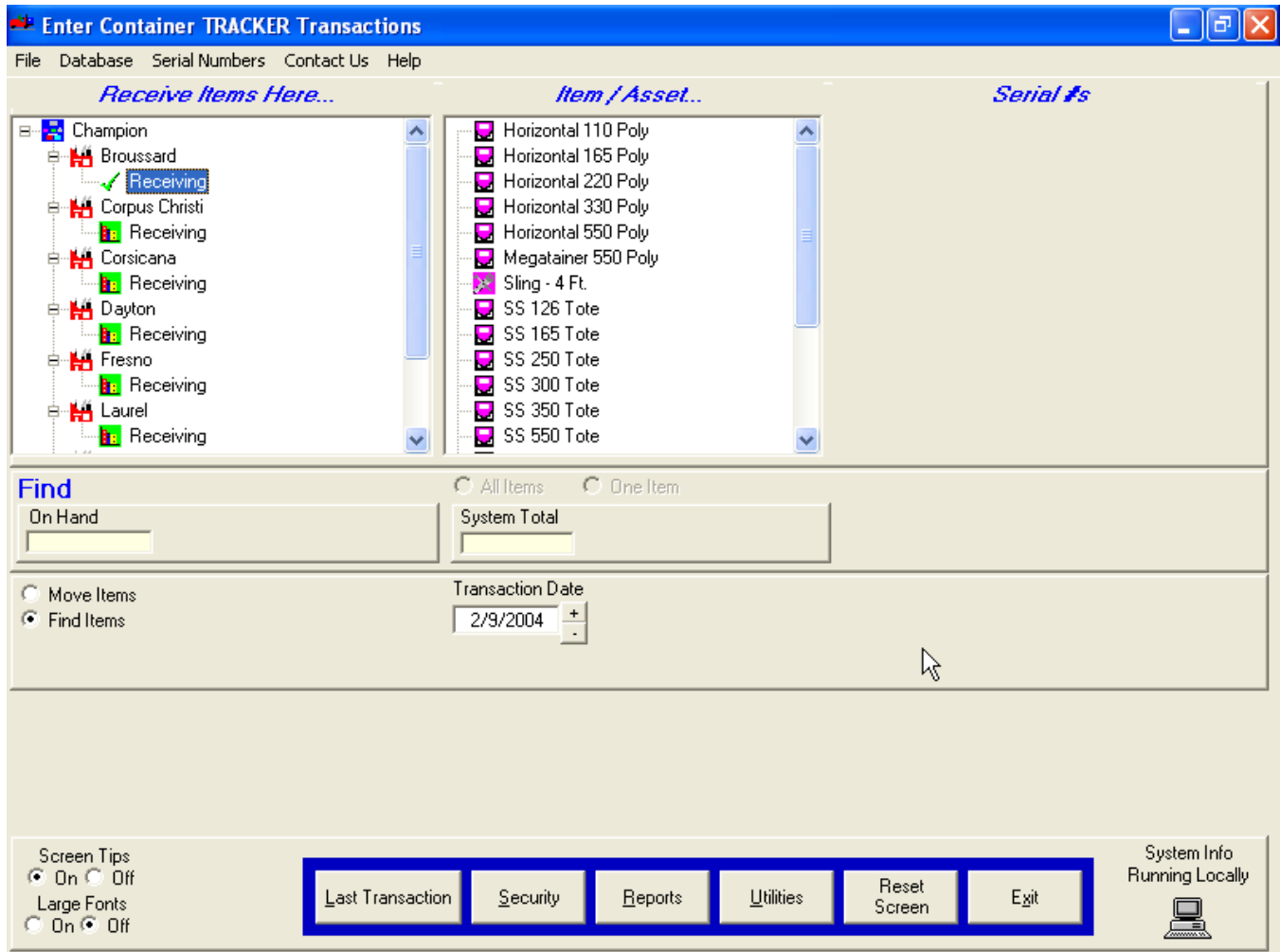
### How to Find Items With Serial Number(s)

- 1) Select the 'Find' mode from the Main Screen. If the 'Move' and 'Find' radio buttons do not appear, the 'Find' mode is not available to you.



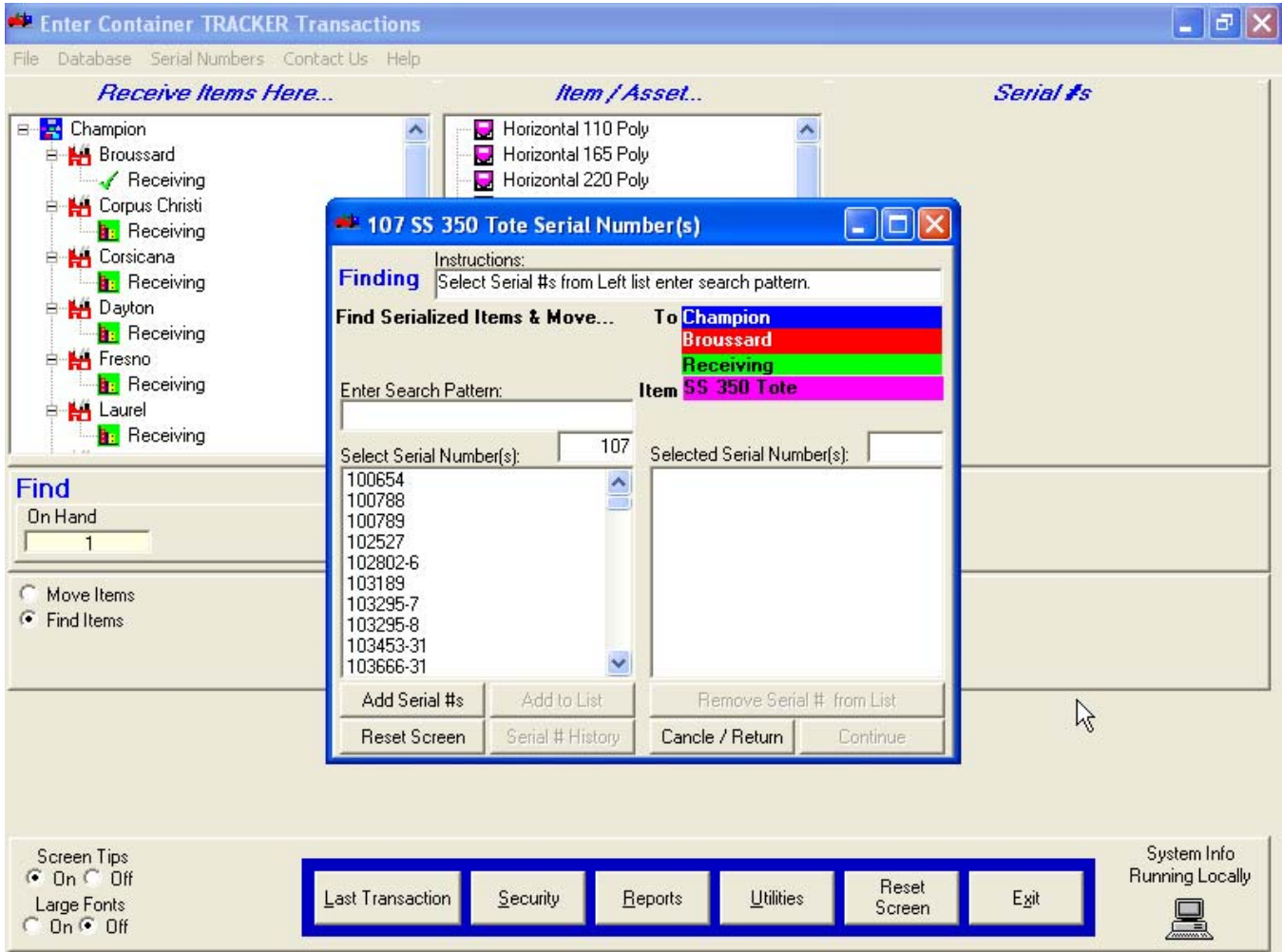
### How to Find Items With Serial Number(s)

- 2) Select the location from the Left-Hand Tree where you intend to receive the serial number.  
Note: Serial Numbers can only be found one at a time because multiple serial numbers may not be at the same locations.



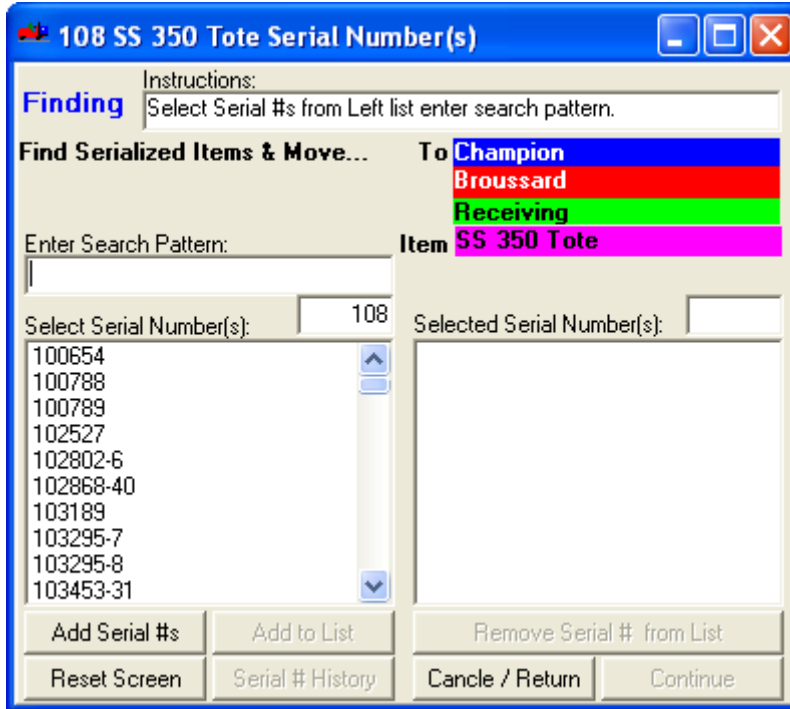
### How to Find Items With Serial Number(s)

- 3) Select the type of Container (Item) you wish to move from the center tree. The 'Select Serial Numbers' screen will display.



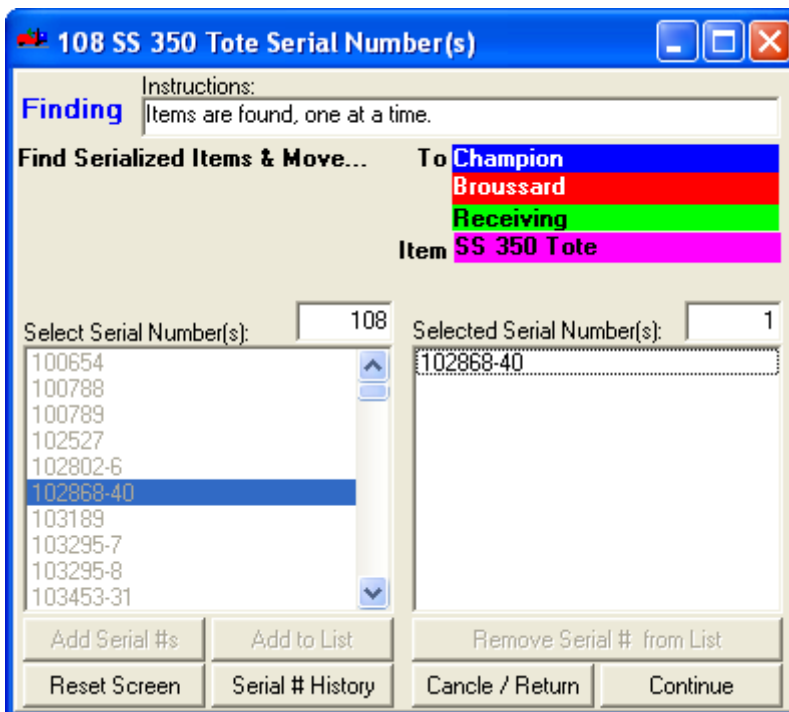
### How to Find Items With Serial Number(s)

- 4) Select a Serial Number(s) from the left-hand list.

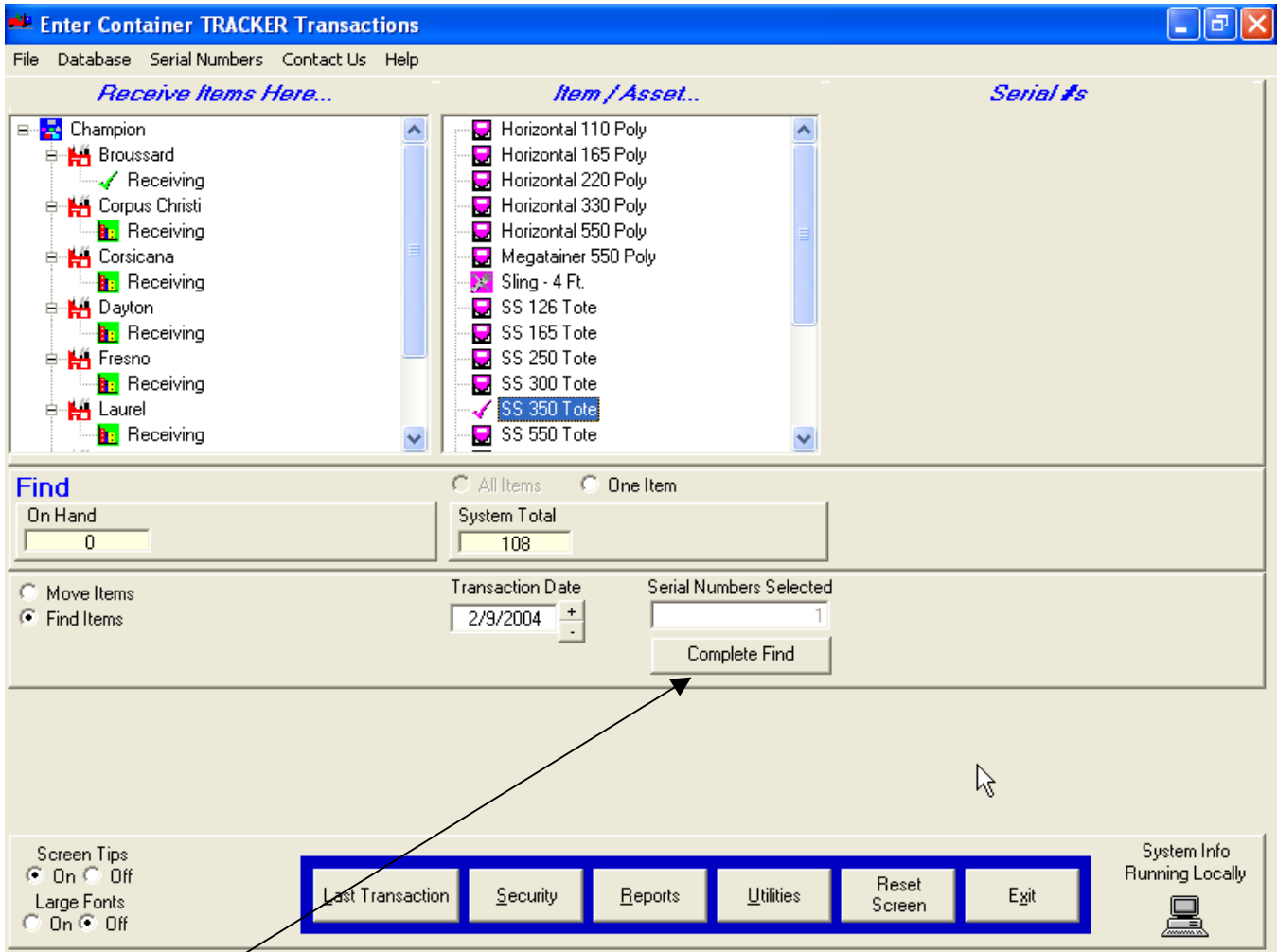


- 5) Click on 'Continue' button. The right-hand tree will display a list of locations where you may send the selected serial numbers.

### How to Find Items With Serial Number(s)

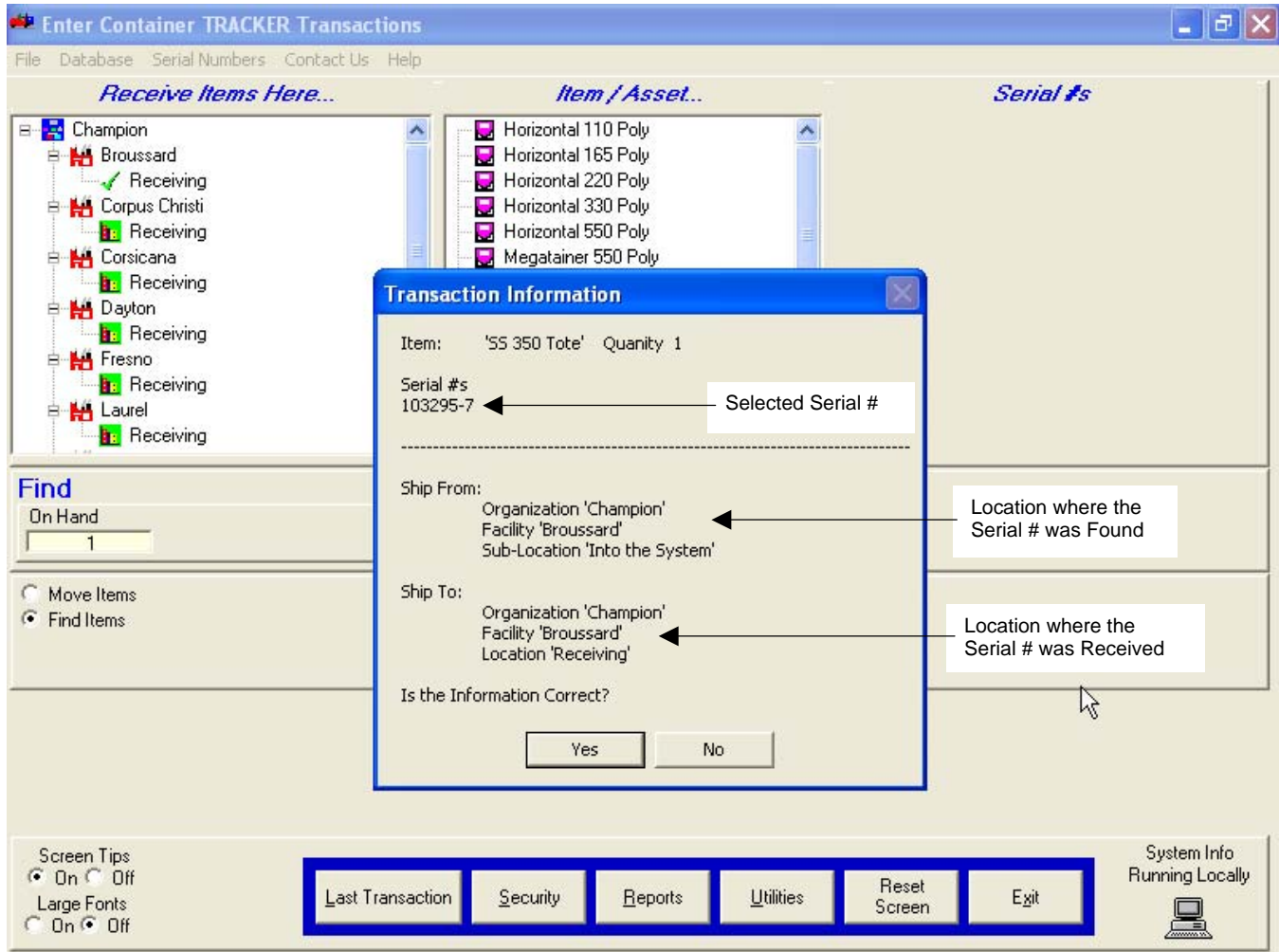


### How to Find Items With Serial Number(s)



- 6) Click on the 'Complete Find' button to finish moving the selected Serial Numbers to the 'Receive Items Here' location.

## How to Find Items With Serial Number(s)



- 7) Click on the 'Yes' button to finish the transaction; click on the 'No' button to cancel the transaction.