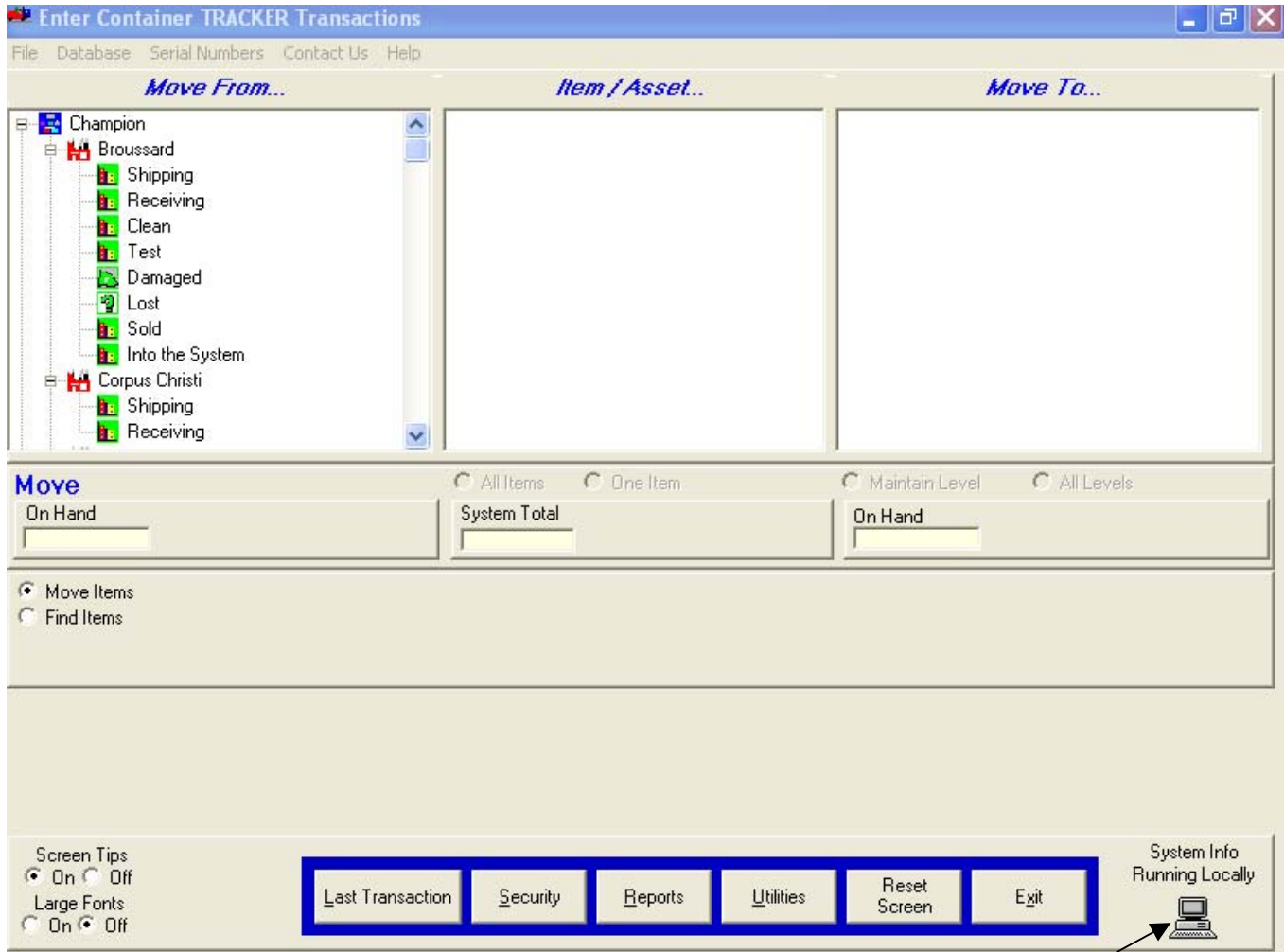


How to Display System Information

1. Start **ContainerTRACKER®** in the normal manner.
2. In the lower right-hand corner of the Main Screen is an icon of a single PC (CT running on a local PC) or multiple PCs (CT or database located on a network).
3. Click on the computer(s) icon and the System Information screen will display.



Click here for System Information.

How to Display System Information

System Information Screen

The System Information Screen shows 1) the database location, 2) where the program is running, 3) Operating System Information, and, 4) System Configuration Information.

Database Location Software Running In Operating System Information

Data Base Location:		C:\1VBM\CT	
Software Running In:		C:\1VBM\CT	
Operating System Information:		Windows NT, Ver. 5.01, Build 2600	
Product Type:	Manual	Patch Level:	0
Version:	3.12.17	Popup State:	Some
Licensed To:		SQL State:	Off
Customized For:		Find Item State:	On
Custom Address:		Serial Number State:	All
Number of Users:	1	System Dwell:	On
Multiple DBs:	Off	Custom Reports:	New
DB Mod Level:	15	Extra Info. Screen:	MainScreen
User Name:	CTAdmin	Serial #:	X
User Signed On As:	Admin	Rev. 2 Date:	Initial
Program Date:		2/9/2004 9:12:44 AM	
Program Size:		5,176 KB	
Database Date:		2/9/2004 1:55:30 PM	
Database Size:		10,434 KB	
Contact Name:			
Location:			
Address:			
Phone Number:			
Email Address:			
Containers:	20	S	20
	V	0	C
	0	D	0
Locations:	All	Blue	Red
	1651	96	424
	Yellow	Green	LandCs:
	0	1227	24939

Print System Info. Return

Database Location – is the physical location of the *containers.mdb* file. It is also the location where all the system reports are stored.

Software Running In – is the physical location of the *containers.exe* file. The Icos and the StartUp folders are in this location.

Each location contains essential **ContainerTRACKER®** files.