

Alarms

ContainerTRACKER® alarms are used to inform you that inventories are below or above levels that you set. There are four alarms; Lower, A, B, and Upper. Alarms may be attached to any item at any location (Green Level). Each of the four alarms has a default message. Also, you can create a special message for any alarm.

The four available alarms are sequenced and are triggered by defined conditions. Alarm values are set so that

$$\text{Lower} < \text{A} < \text{B} < \text{Upper}$$

The Lower alarm is triggered when inventory of a specific item at a specific location falls below the value you set. The Upper alarm is triggered when inventory exceeds the value you set. The Lower and Upper must be used before Alarm A is enabled; Alarm A must be used before Alarm B is enabled.

Alarms A is triggered when the inventory falls below the set value; Alarm B is triggered when inventory is above the set value.

Each of the four alarm types can be turned 'On' or 'Off'. When alarms are turned 'Off' they retain their set values. When A and B alarms are first turned on, they assume a value half way between the adjacent alarms.

ContainerTRACKER® alarms can be used any time you need to be reminded of inventory levels.

For example, consider a plant that runs production seven days per week but only ships product Monday through Friday. The lower alarm could be set to the minimum daily requirement for items. Alarm A could be set for the minimum number required for weekend production.

The B and Upper alarms might be used to let you know that the location is, or soon will be, out of storage area.

Checking Alarm Availability

Alarms are an optional feature in **ContainerTRACKER®**. Before you attempt to set the alarms make sure your copy of **ContainerTRACKER®** has purchased the Alarms option. To determine if you have purchased the Alarms option, follow these steps.

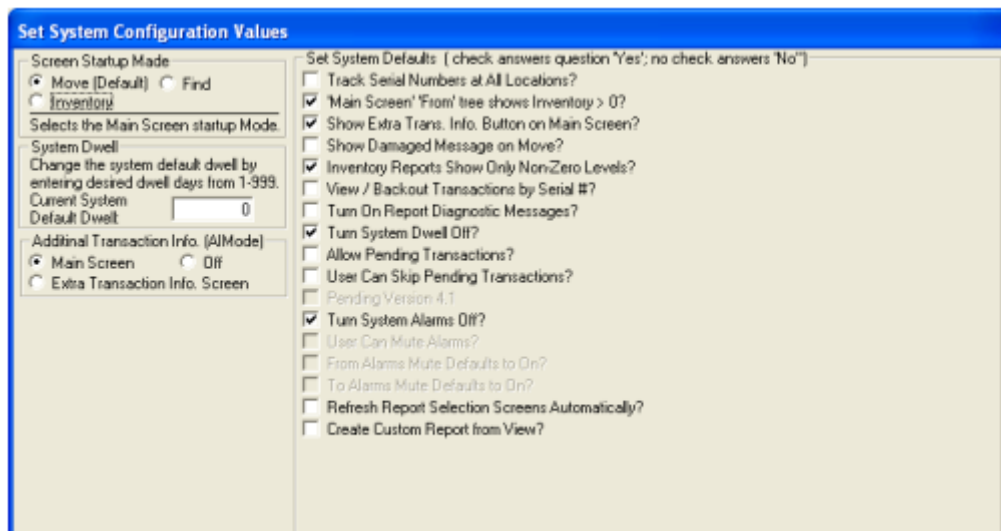
1. From the 'Main Screen' of **ContainerTRACKER®** click on the computer(s) icon in the lower right corner. This will display the 'System Information' screen.

Purchased Options			
SubTracking:	<input type="text" value="Off"/>	<input type="checkbox"/> All Reports	<input type="checkbox"/> Messages
Serial # State:	<input type="text" value="Some"/>	<input checked="" type="checkbox"/> Alarms	<input checked="" type="checkbox"/> Out Loops
Custom Reports:	<input type="text" value="On"/>	<input checked="" type="checkbox"/> Alarm Msgs.	<input type="checkbox"/> Part Math
Data Base Type:	<input type="text" value="Access"/>	<input type="checkbox"/> Automated Data	<input type="checkbox"/> Quantity Statistics
		<input type="checkbox"/> Automated Reports	<input type="checkbox"/> Quantity Cycles
		<input type="checkbox"/> Automated Import	<input type="checkbox"/> Quantity Dwell
		<input type="checkbox"/> Calculate Quantity	<input type="checkbox"/> Real Time Data
		<input checked="" type="checkbox"/> Calculate Serial	<input type="checkbox"/> Reporting DB
		<input type="checkbox"/> Customer Groups	<input type="checkbox"/> Report Designer
		<input type="checkbox"/> Data Load	<input type="checkbox"/> Restrict Move
		<input checked="" type="checkbox"/> Export	<input type="checkbox"/> Serial# Statistics
		<input type="checkbox"/> Export Auto	<input type="checkbox"/> Serial# Cycles
		<input checked="" type="checkbox"/> Find Item State	<input checked="" type="checkbox"/> Serial# Dwell
			<input type="checkbox"/> Sets
			<input type="checkbox"/> Scripts
			<input type="checkbox"/> Touch Screen
			<input type="checkbox"/> Triggers
			<input type="checkbox"/> User Email In
			<input checked="" type="checkbox"/> User Email Out
			<input checked="" type="checkbox"/> User Info. Lists
			<input type="checkbox"/> User Info. Reports
			<input type="checkbox"/> Views
		<input type="button" value="Email System Info. to CT Service"/>	<input type="button" value="Export as .PDF File"/>
		<input type="button" value="Email Setup"/>	<input type="button" value="Main Screen"/>
		<input type="button" value="Print System Info."/>	<input type="button" value="Return"/>

Alarms

2. The lower third of the 'System Information' screen is labeled 'Purchased Options'. In this section there are three columns of check boxes. In the leftmost column, the 2nd checkbox is labeled 'Alarms'. If you have purchased this option, the checkbox will be active and there will be a checkmark to the left of the word 'Alarms'.
3. If the 'Alarms' checkbox is not checked, contact the **ContainerTRACKER**® administrator and determine if you need to purchase this feature.

If you have purchased the feature, there are a few owner set options that must be configured for the 'Alarms' to be active. Contact a **ContainerTRACKER**® administrator and ensure that 'Alarm' feature is active for your system. These owner options are set from the 'System Configuration' screen. The 'System Configuration' screen is accessed from the 'Main Screen' by clicking on the 'System Configuration' entry on the 'Configuration' menu. You must have Administrator or 'Configure System' privileges to access the 'Configuration' menu. The top portion of the 'System Configuration' screen is shown below.



For the 'Alarms' feature to be active, the Turn System Alarms Off? must not be checked.

Setting System Alarms

Alarms are set by item at an inventory location or status. To set 'Alarms' for an Item/Location-Status follow the steps below.

1. Click on the 'Utilities' button on the 'Main Screen'. This displays the 'Utilities Menu'.
2. Click on the 'Set Alarm Levels' button and follow the on-screen instructions.

When alarms are set and activated, a message will display on-screen if the movement of an Item causes its 'From' or 'To' location to fall outside the alarm limits.