

Thank you for your interest in **ContainerTRACKER®**!

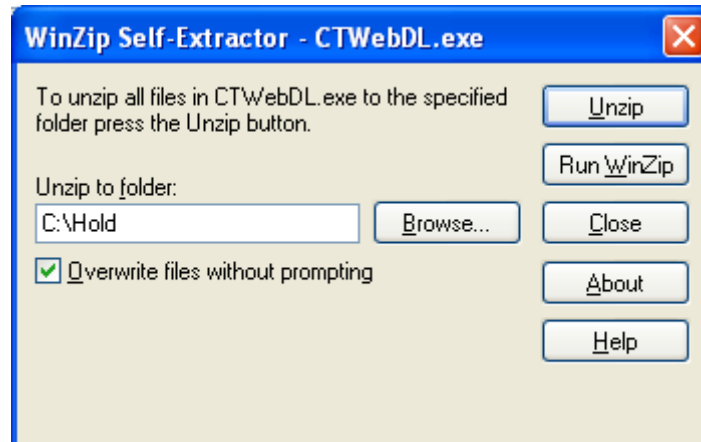
Your request for a demo version of **ContainerTRACKER®** automatically sends an email to International ISO Group, Inc (IIG). We will then send you an email with a download link and a password.

To download the demo, click on the link and enter the password provided in the email you receive. It will prompt you for a location to save the downloaded file, 'CTWebDL.exe'. You will need to remember the directory location

where you saved the downloaded file to start the installation process on your machine.

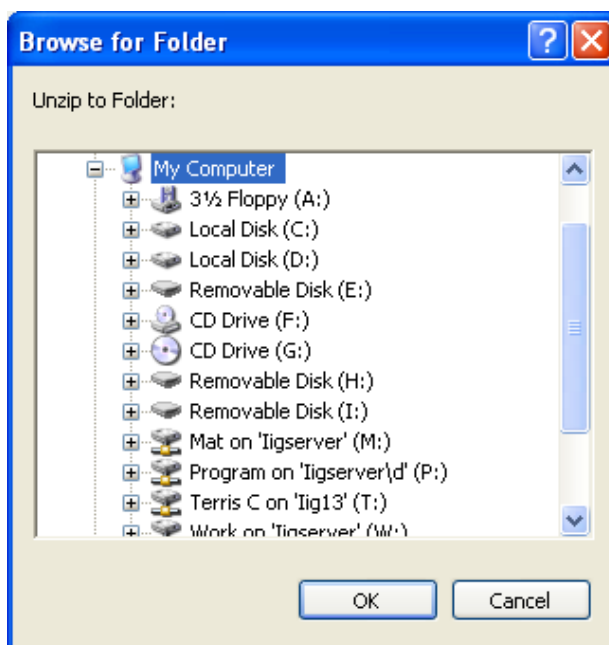
The 'self extracting' zip file 'CTWebDL.exe' is a Windows program that creates and organizes the files required for the **ContainerTRACKER®** demo. You need to open (start) the 'CTWebDL.exe' file on your machine to create the install files. If you don't know how to open (start) a file in Windows, refer to the StartingAProgramInWindows.pdf file located in the download area on the container-tracker.com web site. To create the demo installation files:

1. Open (start) the 'CTWebDL.exe' program it will present the following window:



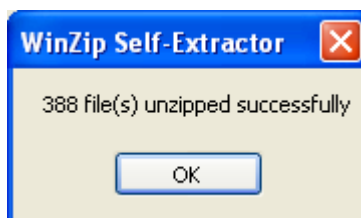
## Web Demo Download Instructions

2. Enter a valid path and folder name in the 'Unzip to folder:' entry box on the displayed screen. You can also click on the 'Browse' button to display a window similar to the following:



The actual list will reflect the drives and folders available to the machine on which you saved the 'CTWebDL.exe' file.

3. Navigate through the drives and folders like you would in Windows Explorer. When you have selected the appropriate folder, click on the 'OK' button. This will return you to the WinZip Self-Extractor screen. Click on the 'Unzip' button to create the **Container TRACKER®** demo installation files in the location you selected.
4. When the self-extractor is finished, it will display a screen similar to the following.



5. Click on the 'OK' button.
6. Open (start) the 'setup.exe' file in the folder you selected. This will start the installation wizard. Follow the instructions in the installation wizard to install the demo.
7. The installation process will create a desktop icon. Click (or double-click) on this icon to start the **Container TRACKER®** demo.