

Exploring The Demo

The **ContainerTRACKER**[®] demo has over 1000 transactions (movements of items) which simulates a working system. It tracks serialized items (IBCs, computers, laptops, and vehicles) and bulk items (totes, containers & pallets). The tanks are subject to DOT regulations and must be tested every thirty months.

The demo automatically adjusts the dates of the transactions so they appear fresh. If the last transaction date is more than ten days old, the demo refreshes the dates so that the last date becomes the previous Friday. This refreshing of the dates is generally transparent, but it causes the reports to be dynamic; they change as the demo date range changes.

Included are a few sample reports that show the results of rental calculations. The date range of the demo transactions is from 6/13/2005 to 9/30/2005 when the reports last ran. When you run the same reports one month later, your report will present different data depending on the current date range of the demo. You can check the current date range of the demo from the Main Screen by clicking on the 'Demo' menu and then clicking on the 'Current Demo Dates' selection. A dialog box appears with the date range information. If you entered any transactions in the demo, they will have dates later than the date range. When you or the demo refreshes the transaction dates, any transactions you entered in the demo are deleted. This will happen automatically when the last demo date is older than ten (10) days or when you enter more than 100 transactions in the demo.

ContainerTRACKER[®] Main Screen

Although **ContainerTRACKER**[®] is fully Windows[®] compliant, however, it is organized somewhat differently to make it easier to use. Often **ContainerTRACKER**[®] is used in shipping and receiving by a number of operators. The normal operators of **ContainerTRACKER**[®] may not be sophisticated computer users. **ContainerTRACKER**[®] is divided into three main operating screens; the Main Screen, the Utilities Screen, and the Reports Screen. An operator can record all movements, check inventories of items at all locations, locate serialized items in the system and correct transaction mistakes from the Main Screen. **ContainerTRACKER**[®]'s security system can be set to prevent individual operators from changing the system configuration or viewing system reports. When so configured, the operator only uses the Main Screen and Feature Screens that popup from the Main Screen.

The Main Screen provides access to these functions:

- Entering transactions (movement of items),
- Checking inventory of items anywhere in the system,
- Changing between operating modes 'Move', 'Inventory' and 'Find',
- Displaying alarms and alarm messages,
- Checking previous transactions entered,
- Locating specific serial numbers within the system,
- Checking the movement history of a specific serial number,
- Set shipping delays for outbound movements,
- Checking user associated information,
- Checking 'System Settings' and purchased options,
- Locating critical system files (for troubleshooting problems),
- Emailing messages from within **ContainerTRACKER**[®].
- Minimizing the **ContainerTRACKER**[®] window, and,
- Exiting **ContainerTRACKER**[®].

Entering Transactions

The demo allows you to enter transactions to record item movements. There are two transaction modes 'Move' and 'Find'. Most transactions are entered in the 'Move' mode. Serialized items can create a transaction by being found in the 'Find' mode. The current **ContainerTRACKER®** mode is identified immediately below the left-hand tree. The 'Inventory' mode is used to view inventories from the 'Main Screen'.

The 'Move' mode is the normal transaction entry mode. The following information refers to the 'Move' mode. As items are moved throughout the system, the inventory at the 'Move From' and the 'Move To' statuses or locations adjust automatically. When a transaction is entered, the result is immediately calculated at the 'From' location. It can be delayed to the 'To' location. For example, if it always takes two days by truck for a specific movement, the 'From' inventory is reduced when the transaction is entered. If you set the pending days for two (2), the 'To' inventory will not increase for two (2) days. You can choose to adjust your transactions this way to reflect that the items shipped are not yet available at the 'Shipped To' location. For simplicity, all the transactions in the demo are shown as immediate.

'Move' transactions are entered from left-to-right across the screen. The left-hand tree is always the location (dock 23, warehouse B, the casting plant, oil rig 241) or status (clean, empty, allocated) the item moves 'From'. When the 'From' location/status is selected, available items are displayed in the middle tree. You will notice that this is usually a subset of all items tracked in the system.

ContainerTRACKER® enforces rules of movement. Not all items are allowed at all locations. This prevents administrative mistakes like sending company A's containers to company B.

When you select an item from the middle tree several things happen:

- The current inventory of the item (On Hand) is displayed under the left-hand tree,
- The alarm levels for the 'From' location (if any) are displayed under the left-hand tree,
- The 'System Total' for the selected item is shown below the middle-tree, and,
- If the selected item is tracked by quantity the right-hand 'To' tree displays a list of locations where the selected item is allowed to go, or,
- If the selected item is tracked by serial number, a list of serial numbers for the selected item at the selected location is displayed. When the serial number(s) are selected, the right-hand 'To' tree displays a list of locations where the selected serial numbers may go.

When you select a location/status from the right-hand tree the following things happen:

- The current inventory of the item (On Hand) is for the selected 'To' location is displayed under the right-hand tree,
- The alarm levels for the 'To' location (if any) are displayed under the right-hand tree, and,
- The quantity entry text box is displayed. If the item you selected is being tracked by quantity, you can enter a number in the text box. If the item is being tracked by serial number, the quantity of serial numbers selected from the serial number list is shown in the text box and is disabled so you cannot modify the entry.

System Specific Information

As you enter transactions you may notice that sometimes when you enter the quantity to move (or select serial numbers) the complete 'Transaction' button becomes visible. At other times the 'User Information per Transaction' frame is visible. **ContainerTRACKER®** can be configured to require information to associate with each transaction. You will notice the individual fields are Cyan (light blue) or white.

When white, an entry is required before you can complete the transaction. The action of these fields and

the drop down lists associated with them are configurable. For example, if you ship chemicals in IBC's, it might be useful to require the product be identified. In the demo, the drop down lists allow you to select or enter a product; this field is required. The second field allows, but does not require you to select an Account Rep. for the transaction.

When you purchase **ContainerTRACKER**[®] and the required options for user field entries, the number of fields (0-3), their labels, the data entry rules for each field, and the locations that require information are all configurable.

Try This with the Demo

Remember some 'From' locations may require you to add transaction specific information.

1. Enter a variety of transactions in the demo in the 'Move' mode for quantity-tracked items (pallets, boxes & fold downs).
2. Enter a variety of transactions for serialized items (330, 550 Stainless; 330 Painted, & 1250 Poly).
3. To see an alarm message, attempt to move 10 'Blue 18 x 36' Totes from 'Aluminum Widgets' to 'Lodi'.
4. Attempt to move more items than are on hand from a location. For example, try to move 40 'Blue 18 x 36' Totes from 'Aluminum Widgets' to 'Lodi'.
5. After you have entered a few transactions, click on the 'Previous Transactions' button at the bottom-left-center portion of the screen. When you have several transactions to enter this is a good way to remember where you were. You can also use this screen to check details of transactions like what serial numbers were moved with the transactions.
6. Switch to the 'Find' mode on the Main Screen by clicking on the 'Find' radio button at the left-side-middle of the screen. In the 'Find' mode there are only a few left tree locations and the right tree disappears. The locations that appear in the tree were designated as locations serialized items can be found to. When you select an item from the middle-tree the serial number select screen will appear. Select a serial number from the list. Items can only be found one at a time. **ContainerTRACKER**[®] will create a transaction to move the selected item from wherever it is in the system to the location you selected in the left-hand tree. This function is useful if you receive items from trucks that work a route. The driver does not have to record what was picked up where because **ContainerTRACKER**[®] knows the last location of the picked up items. 'Find' mode is only used with serialized items.
7. Try a variety of other transactions. Then look at the effects it produces with the system reports (see the section below).

Serial Number Functions

Tracking serial numbers provides a unique set of challenges. When items are tracked in quantity, there is less data and less information available. When serial numbers are tracked more data is generated and more information is necessary to manage the asset. **ContainerTRACKER**[®] tracks serial numbers everywhere throughout the system and at designated locations within the system. It tracks items by quantity throughout the system whether they are serialized or not.

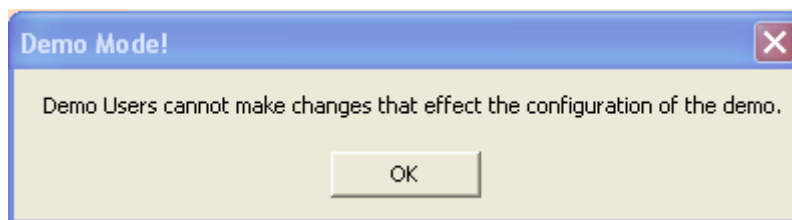
Often people think it is somehow inherently better to track items individually using serial numbers; it is not. It is always easier to explain the movements throughout the system if items are serialized but it takes more time and effort. There are reasons why items must be serialized (regulatory requirements, customer requirements) but every organization has specific tracking needs. Sometime the logistic consequences of serializing deployed fleets of assets make it virtually impossible.

ContainerTRACKER® accommodates all three possible tracking methods, serialized everywhere, serialized in some places and by quantity in others, and by quantity everywhere. The type of tracking is determined by item/location. Every system can track items in all three modes simultaneously. The demo tracks some items by quantity and others by serial numbers. The demo does not show items tracked by serial numbers at some locations and by quantity at others.

Serialized items that are used as cyclic assets need additional information that is not captured for items that are tracked by quantity. **Container**TRACKER® provides access to serial number lists everywhere it is convenient. The three primary screens, the Main Screen, the Utilities Screen and the Reports Screen. Each has a button labeled 'Lookup Serial #'. This screen allows you to locate the serialized item within the system, view a history of all the individual movements of that item through the system, view item associated information (test date, purchase price, purchase date, & etc.), and view the transaction information associated with the last move of that serial number.

ContainerTRACKER® Utilities

The functions on the Utility screen are used to configure the **Container**TRACKER® system. Through the utilities you create new items, new locations/statuses, set alarms, create alarm messages, edit existing items and levels and a variety of other functions that allow you to customize the system. When using the demo, most of the utility functions can be selected and explored. These functions work up to the point where a change to the configuration is to be made. Explore the Utility function in the demo to get an idea of the visual interfaces that are used to configure your version of **Container**TRACKER®. If you try to perform a function that will reconfigure the demo you will get a message like the one that follows.



ContainerTRACKER® Reports

You will need to be able to retrieve specific information from the system in a variety of ways to manage your cyclic asset tracking system efficiently.

Reporting is a strong suite of **Container**TRACKER®. There are 58 different styles of reports that are associated with various functions in **Container**TRACKER®. These reports can be selected in numerous ways to provide timely and precise information.

There are two main classes of reports, Transaction reports and Inventory reports. The rest of the reports are exception reports (alarms, dwell, etc.), utility reports, and single function reports (items due for test, serial number history). The Transaction and Inventory reports allow you to select the data for a specific report by a variety of criteria. There are approximately six styles of reports for each, but you can select virtually unlimited data sets. There are more than 200 million separate and distinct Transaction reports

and 2 million separate and distinct Inventory reports available with the demo data.. Other reports are selectable by appropriate criteria. There are also a variety of serial number specific reports and transaction specific reports that provide information for each specific item or occurrence.

No organization can use millions of reports; the ability to generate this vast array of reports virtually assures that you will be able to select the exact reports you need to manage your assets. You can easily communicate any of these very specific reports to anyone via email from within

Container TRACKER®.

The Report Viewing Screen

All **Container TRACKER®** reports are viewed with a common viewing screen. This allows you to navigate through long reports, change the view size, print, export and email reports from one common screen. The reporting tool is the popular Seagate's Crystal Reports. Any report that you view can be saved in Adobe's popular .PDF file (Portable Document Format) by a single click.

Container TRACKER® creates a file name and saves the report in an export directory. This file is automatically attached to email that is initiated from the report viewing screen.

The Nature of Tracking Information

Managing cyclic assets is always a local issue. No matter how much the network is monitored by anyone of the partners, each partner must provide local control of their assets. **Container TRACKER®** uses the World Wide Web, through convenient email, to communicate the specific information relative to you and your various partners. Most of the information in the system is useless to any specific partner in the network. For example, imagine a network of partners 'A' through 'M' and your organization. The assets belong to your company. It is important for you to track the exchange between your company and 'A', your company and 'B', etc. It is not important that 'B' has any information about 'F'.

Most of the time movements of items come close to the plan. You send a partner 40 items they send back 40 items or 39 maybe. The vast amount of the data in the tracking system is not news. The information you really want is what did not meet your plan. This is exception reporting. It may be nice to know that 99 of 100 tasks worked as planned, but to manage your assets you need to identify the one that did not. **Container TRACKER®** allows you to generate specific reports to identify performance. You can generate a report that shows movement of a single item between your facility and a single partner for last month. I sent you 480 Big Boxes last month (September maybe); you returned 441 Big Boxes in the same period. You need these specific detailed performance reports to ensure you recognize poor system performance as it happens.

Custom Reports

Container TRACKER® allows you to keep the reports you generate often as Custom Reports. Custom Reports can be created in three categories Transaction, Inventory and Other. Each category can have nine defined reports and assign these reports to on screen buttons. Once a Custom Report is defined simply clicking a button generates the report. Often 27 reports isn't enough. **Container TRACKER®** supports approximately 31,000 Custom Reports. The 27 most common can be assigned to specific buttons, the rest are assigned a number and selected from a list.

The demo has 12 defined Custom Reports. Each is assigned to a button. You can generate these reports by clicking on the associated button. If you create more than 27 Custom Reports or more than nine (9) per category, all of the Custom Reports cannot be assigned to a button. All Custom Reports receive a

number when they are generated. You can see how to access non-button Custom Reports by clicking on the 'View All Custom Reports' button on the Reports screen.

Try This with the Demo

Access the Reports screen by clicking on the 'Reports' button on the Main Screen. The 'Reports' screen is organized into five (5) horizontal sections for Transactions, Inventory, Other Reports, Utility and Exception Reports and Unassigned. These sections are shown below

| | | | |
|-------------------------------------|----------------------------------|--------------------------------|---------------------------|
| Transaction Reports | Waldos Outbound Tanks Last Month | Tank Leasing Trans. Last Month | To Euro-Chem Last Month |
| Change Transaction Custom Reports | | | From Euro-Chem Last Month |
| View Additional Transaction Reports | | | |

| | | | |
|-----------------------------------|-----------------------------|------------------------|-----------------------------------|
| Inventory Reports | Tank Lease Inventory | Current Tank Locations | Chemical Distribution Tank Totals |
| Change Inventory Custom Reports | Aluminum Widget Returnables | | |
| View Additional Inventory Reports | Tank Serial Num. by Item | | |

| | | | |
|--|-----------------------------|-----------------------|-----------------------------------|
| View Additional Other Reports | Inventory Adjusted or Added | All Inventory Changes | Tanks to Test in the Next 30 Days |
| Define Other Custom Reports | | | |
| <input type="checkbox"/> Save Next Other Report View | | | |

| | | | |
|-----------------------------|--------------------------------|-------------------------|--|
| Change Other Custom Reports | View All Custom Reports | Help for Custom Reports | |
|-----------------------------|--------------------------------|-------------------------|--|

| Utility and Exception Reports | | | |
|-------------------------------------|--------------------------|--------------------|---------------------------------|
| System Information | Inventory Change Reports | Lower Alarms Only | Serial Number History |
| Location (Level) Names | | Upper Alarms Only | Serial # Dwell Exception Report |
| Container (Item) Names | Alarms Currently in Use | A Alarms Only | Items Due for Testing |
| Item / Location / Set Configuration | All Alarms | B Alarms Only | Product List |
| Contact Information | | Lower and A Alarms | Account Rep. List |
| Calculate Rental Plans | | Upper and B Alarms | |

| | | | |
|--|--|--|-----------------|
| | | | |
| | | | |
| | | | |
| | | | |
| | | | |
| | | | Lookup Serial # |
| | | | Return |

The second, third and fourth columns of the first three sections are the Custom Reports buttons.

1. Access the Transaction selection screen by clicking on the 'Transaction Reports' button in the upper-left-hand side of the screen. From this screen you can select the criteria for the reports you want to view. The selections are generally made top-to-bottom, left to right. Because of the complexity of the selection process as you select some criteria it becomes disabled. You can click on the 'Reset Screen' button if you want to restart the selection process.
2. Access the Inventory selection screen by clicking on the 'Inventory Reports' button in the upper-left-hand side of the screen. Explore the various selection criteria and report styles.

3. Define some Custom Reports. Get information about how to define Custom Reports by clicking on the 'Help for Custom Reports' button in section three, lower-center portion. In the demo you can define new Custom Reports, rename, delete and rearrange the Custom Reports. If you want to restore the Custom Reports to their original demo state, select 'Reset Demo' from the 'Demo' drop down menu on the Main Screen.

Rental Calculation Reports

One of the most powerful features of **ContainerTRACKER**[®] is the calculation of rental rates. This calculation evaluates the dynamic performance of your asset tracking system. It is beyond the scope of the demo to create period sets, rental rates and rental plans. You can create thousands of rates specific to items, categories of items and specific locations.

In the demo there are rental calculations for serialized items that represent the operations of a tank leasing company. You can access rental calculations and the subsequent reports by clicking on the 'Calculate Rental Plans' button in the lower-left-hand area of section four (4).

Try This with the Demo

1. Click on the 'Calculate Rental Plans' button in the lower-left-hand area of section four (4). It will display a date range selection screen. Select 'Last Month' as the date range. The rental calculations screen will appear. Make the selections shown below.

Calculate Charges

Rental Calculation Date Range
From: 9/1/2005 Reselect
To: 9/30/2005 Date Range

User Information Display
 Display Information for Last Location Related Move
 Display Last Information Related to the Item

Select Rental Plans
 Select a Rental Plan
 Calculate All Rental Plans
 Select Plans by Category
 Select Plans by Item

Add Plans with No Items to Data?

Sort Calculation History Report by...
 Level / Location
 Dates - New to Old
 Dates - Old to New

Rental Plan Name: 330 Stainless Items: AgProducts 330 Stainless
Calculation Plan Name: Standard Stainless Rate

Items in Print Table: 0

Select Rental Plan:
AgProducts 330 Stainless
AgProducts 550 Stainless
AgProducts Poly 1250
Euro-Chem 330 Stainless
Euro-Chem 550 Stainless
Euro-Chem Poly 1250

Calculation Help Delete Previous Data Print Calculation History Calculate Charges

Main Screen Return Reset Screen Print Calculations Add User Info. to Report?

2. Click on the 'Calculate Charges' button. Your calculation progress will be shown on the screen. When finished, click on the 'Print Calculations' button to show the rental calculations for

AgProducts 330 Stainless containers. Rental plans accumulate. If you calculate a plan, its data stays in the table unless you click on the 'Delete Previous Data' button.

There are six .PDF files with sample rental calculations. They are available on the root directory of the demo install CD and stored in the 'ExportReports' directory with the following names:

- AgProducts330SS.pdf
- AgProducts550SS.pdf
- AgProductsPoly.pdf
- EuroChem330SS.pdf
- EuroChem550SS.pdf
- EuroChemPoly.pdf

You may need to use your imagination to see how rental calculation fits within your organization. Essentially it evaluates dynamic performance within the system and assigns a cost to poor performance. If your partners agree to pay rental charges, you can recoup the cost of their poor performance. If you cannot recoup the cost, you have very specific information about the cost of your partner's poor performance.

Thank you for taking the time to evaluate **ContainerTRACKER®**. We are confident it can provide a cost effective solution to your asset tracking needs whether they are simple or complex.

If you have questions about how **ContainerTRACKER®**'s features can help you manage your cyclic assets please contact us. You can contact us by phone at 800-476-3066 or by email at iig@iigsystems.com.