

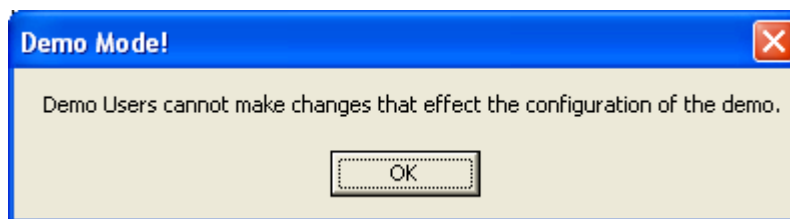
The Mechanics of the Demo

As you work through the demo you will notice the demo represents a period of approximately four months. The dates of the individual movements are automatically adjusted to keep them fresh. If you run the demo today, it will have transactions for the last four months. If you run it six months from now, it will still have transactions from the last four months. The transaction dates the 'test due', and the 'last test' dates are adjusted when the demo is started.

You can enter a limited number of transactions in the demo, approximately 100 or so. Its not a good idea to use the demo for valuable data because when the transactions are refreshed or when you exceed the number of transactions the demo allows, the transaction dates are reset automatically and the transactions you enter in the demo are deleted.

When you are in the demo mode, there is a 'Demo' menu available from the front screen. You can use this menu to get information about the demo, refresh the demo dates, reset the demo to its original state and perform other functions.

When you are in the demo mode you will have access to screens that would change the configuration of the demo. The demo will allow you to make selections and enter some data. When you attempt to save your changes, the demo will display the message.



When you purchase **ContainerTRACKER®** all the features you purchase will be activated.

It takes a little or a lot of imagination to see your organization in the demo. Any organization may not need all the features demonstrated. You may not need or want alarms, serialized item tracking or rental calculation. These features are independent and either purchased separately or can be disabled during system configuration. Many of the features are data dependent. For example, if you have the alarm feature and do not create any alarms, no alarms will ever display. **ContainerTRACKER®** offers sophisticated and powerful solutions to all cyclic asset tracking situations. It truly is a solution you can't outgrow.

Enjoy the **ContainerTRACKER®** demo. Contact us at 800-476-3066 if you need additional information about **ContainerTRACKER®**